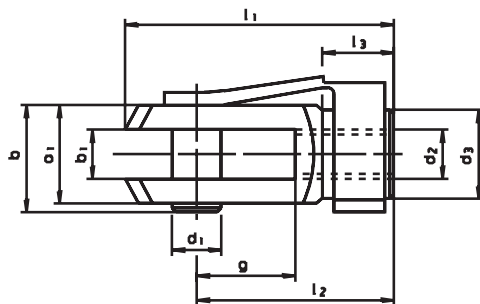


SM 1230

DIN 71751 A - ES

Gabelköpfe mit Federklappbolzen

Fork joints with yokes



Catalog No. **d₁ X g**
SM 1230 04 X 08



Gabelkopf, Bolzen: Automatenstahl
Feder: Federbandstahl
verzinkt, chromatiert
Oberfläche blank und geölt
head and bolt: steel
circlip: steelplate zinc plated, blue passivated
surface blank and oiled



mm



Linksgewinde und
left hand thread and



d ₁ H9/ h11 ∅	g	€	d ₂ ∅	d ₃ ∅	l ₁	l ₂	l ₃	b	a ₁	b ₁	kg
04	08	2,25	M04	08	21	16	6,0	11	08	04	0,005
04	16	1,50	M04	08	29	24	6,0	11	08	04	0,007
05	10	1,49	M05	09	26	20	7,5	12	10	05	0,009
05	20	1,68	M05	09	36	30	7,5	12	10	05	0,013
06	12	1,71	M06	10	31	24	9,0	14	12	06	0,015
06	24	1,86	M06	10	43	36	9,0	14	12	06	0,022
08	16	2,14	M08	14	42	32	12,0	19	16	08	0,037
08	32	2,45	M08	14	58	48	12,0	19	16	08	0,054
10	20	2,72	M10	18	52	40	15,0	23	20	10	0,074
10	40	3,10	M10	18	72	60	15,0	23	20	10	0,116
12	24	3,82	M12	20	62	48	18,0	28	24	12	0,121
12	48	4,49	M12	20	86	72	18,0	28	24	12	0,174
14	28	10,93	M14	24	72	56	22,5	31	27	14	0,178
14	56	11,25	M14	24	101	85	22,5	31	27	14	0,258
16	32	8,05	M16	26	83	64	24,0	36	32	16	0,282
16	64	18,00	M16	26	115	64	24,0	36	32	16	0,410
20	40	39,40	M20	34	105	80	30,0	44	40	20	0,520

4

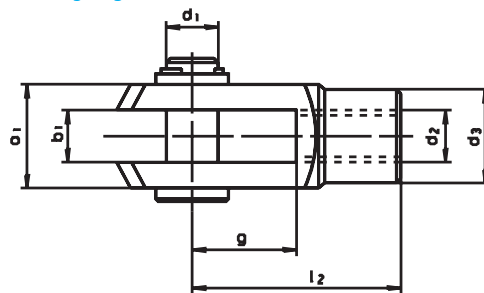
SM 1231

DIN 71751 A



Gabelgelenke

Eye joint links



Catalog No. **d₁ X g**
SM 1231 04 X 08



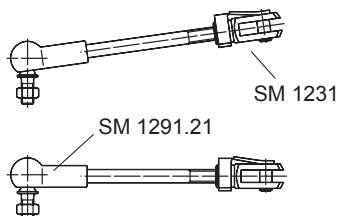
Gabelkopf, Bolzen: Automatenstahl
Feder: Federbandstahl
verzinkt, chromatiert
Oberfläche blank und geölt
head and bolt: steel
circlip: steelplate zinc plated, blue passivated
surface blank and oiled



mm



Linksgewinde,
left hand thread,



d ₁ H9/ h11 ∅	g	€	d ₂ ∅	d ₃ ∅	l ₂	a ₁	b ₁	kg
04	08	2,10	M04	08	16	08	04	0,003
04	16	2,55	M04	08	24	08	04	0,005
05	10	2,16	M05	09	20	10	05	0,005
05	20	2,40	M05	09	30	10	05	0,009
06	12	2,28	M06	10	24	12	06	0,009
06	24	2,52	M06	10	36	12	06	0,020
08	16	2,34	M08	14	32	16	08	0,021
08	32	3,00	M08	14	48	16	08	0,037
10	20	3,63	M10	18	40	20	10	0,038
10	40	3,95	M10	18	60	20	10	0,038
12	24	4,68	M12	20	48	24	12	0,066
12	48	5,20	M12	20	72	24	12	0,068
14	28	6,28	M14	24	56	27	14	0,096
14	56	8,75	M14	24	85	27	14	0,101
16	32	10,30	M16	26	64	32	16	0,145
16	64	10,50	M16	26	96	32	16	0,147
20	40	20,40	M20	34	80	40	20	0,262