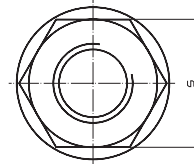
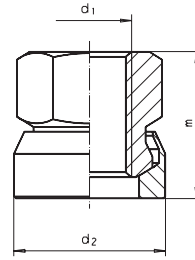


SM 1270-3

Sechskantmuttern mit Kugelpfanne Hexagon collar nuts with spherical seat



Catalog No. **d₁**
SM 1270-3 M16



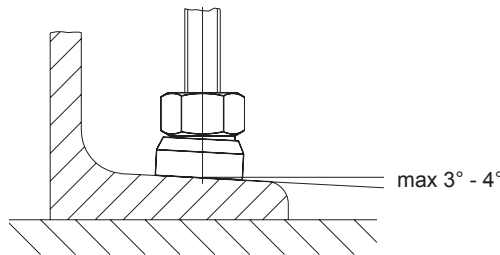
Stahl
steel

mm



Reinigen mit
SM 1306
Clean with

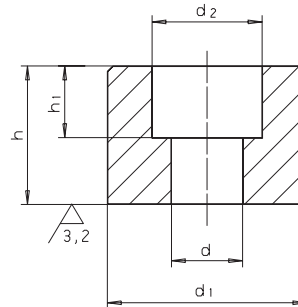
Sichern mit
SM 1301
Lock with



d ₁ Ø	€	d ₂ Ø	m	s	kg
M08	4,96	17	14,0	13	0,012
M10	5,36	21	17,5	16	0,027
M12	6,18	24	21,5	18	0,038
M16	9,68	30	28,0	24	0,073
M20	15,05	36	35,0	30	0,140
M24	20,43	44	42,5	36	0,260
M30	30,82	55	56,0	46	0,550

SM 1270-5

FüÙe Feet

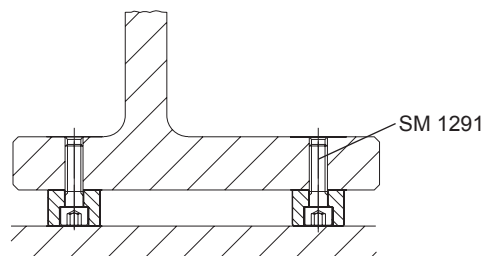


Catalog No. **H** **Form**
SM 1270-5 12 Ku



St: Stahl / steel
Ku: Kunststoff / plastic

mm



h + 0,03	€		d Ø	d ₁ Ø	d ₂ Ø	h ₁	kg	
	St	Ku					St	Ku
10	4,50	4,05	5,5	16	9,0	05	0,012	0,002
12	5,20	4,67	6,5	20	11,0	07	0,023	0,004
16	6,43	5,79	8,5	25	14,0	09	0,048	0,009
20	8,73	7,86	10,5	32	17,0	11	0,100	0,017
25	10,89	9,79	13,0	36	19,5	13	0,156	0,030