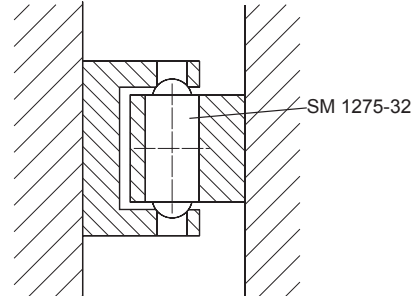
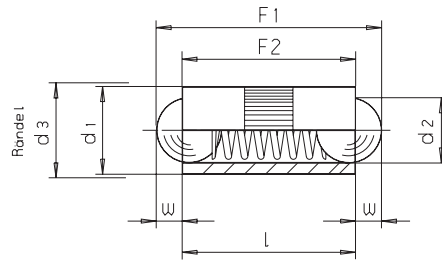
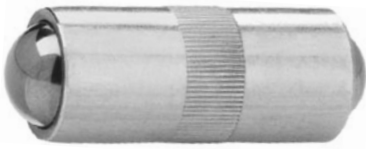


SM 1275-32

Doppelseitige Druckstücke, federnd

Spring plungers / spring thrust pads double ended



Catalog No. d_1
SM 1275-32 02.50

\varnothing 02.50 - 08.00

Hülse aus Messing, Kugel aus Nirosta
housing from brass,
ball from stainless steel

mm

Als Arretierung, Sicherung sowie als elektrischer Kontaktgeber verwendbar.
To be used for locating and securing, as well as electric contacts.

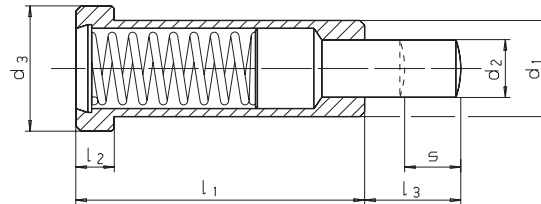
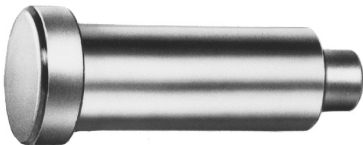


d_1 \varnothing	€	d_2 \varnothing	d_3 \varnothing +0,05	l	w	Druck [N] / Pressure		kg
						Anfang Start F_1	Ende End F_2	
02.50	1,34	2,0	2,52	5,3	0,65	1,3	2,5	0,001
03.00	1,34	2,5	3,02	7,3	0,80	2,0	4,5	0,001
04.00	1,40	3,0	4,03	9,0	0,90	2,5	7,5	0,001
05.00	1,39	4,0	5,03	10,8	1,20	3,5	8,0	0,001
06.00	1,45	5,0	6,03	12,6	1,60	3,5	10,5	0,002
07.00	1,52	6,0	7,03	14,0	2,00	4,0	12,0	0,003
08.00	1,67	6,5	8,03	18,0	2,10	6,0	15,0	0,005

SM 1275-4

Druckstücke, federnd

Spring plungers / spring thrust pads



Catalog No. d_1
SM 1275-4 10

Quantity discount rate
Ab Menge ab 100
Rabatt 5%
Pro Abmessung / Per size

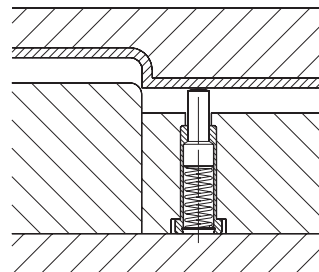
Stahl
steel

mm



Reinigen mit
SM 1306
Clean with
Seite 360

Kleben mit
SM 1301
Lock with
Seite 357



d_1 \varnothing -0,05	€	d_2 \varnothing	d_3 \varnothing	l_1	l_2	l_3	s	Druck [N] Pressure		kg
								Anfang Start	Ende End	
06	3,13	2,7	8	20	3,2	06	3,5	10	22	0,004
08	3,13	3,9	10	24	3,2	08	4,5	30	90	0,008
10	3,48	5,9	13	30	4,0	10	5,5	42	110	0,014
12	3,48	7,9	16	36	5,0	12	6,5	50	130	0,026