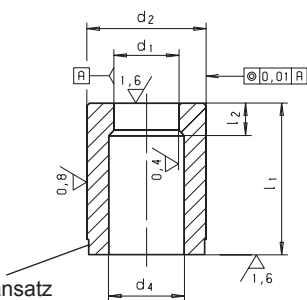
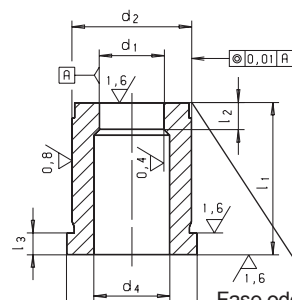




Fase oder Zentrieransatz
chamfer or centering neck



Form A



Form B

Fase oder Zentrieransatz
chamfer or centering neck



Catalog No.	Form	d ₁	d ₂	l ₁
SM 10061	A	01.0	05	16



Quantity discount rate

Ab Menge	50 - 99	100 - 199	200 - 499	500 <
Rabatt	5%	15%	20%	30%

Pro Abmessung / Per size



Preise für kleinere Mengen auf Anfrage.
Prices for smaller quantities on request.



HSS



gehärtet und geschliffen
hardened and ground



0,1; ab Ø 15 = 0,5



mm



Form A: ohne Bund / without head
Form B: mit Bund / with head



andere Materialien und Abmessungen
other material and dimensions



Reinigen mit
SM 1306
Clean with
Seite 360



Kleben mit
SM 1300
Lock with
Seite 356

Maßstabelle / Dimensions

d ₁ Ø H8	d ₂ Ø		d ₃ Ø	d ₄ Ø max.	l ₁ + 0,5 0				l ₂	l ₃ + 0,25 0
	Form A	Form B			- 0,25					
01,0 - 02,4	05,0	08	2,8	16	20	25	-	2	5	
01,6 - 03,0	06,0	09	3,5	16	20	25	-	3	5	
02,0 - 03,5	08,0	11	4,0	16	20	25	32	4	5	
03,0 - 05,0	10,0	13	5,8	16	20	25	32	4	5	
04,0 - 07,2	13,0	16	8,0	-	20	25	32	5	5	
06,0 - 08,8	16,0	19	9,5	-	20	25	32	5	5	
07,5 - 11,3	20,0	24	12,0	-	20	25	32	8	5	
11,0 - 16,6	25,0	29	17,3	-	20	25	32	8	5	
15,0 - 20,0	32,0	36	20,7	-	20	25	32	8	5	
18,0 - 27,0	40,0	44	27,7	-	20	25	32	8	5	
26,0 - 36,0	50,0	54	37,0	-	20	25	32	8	5	

Form A

d ₁ H8	d ₂ n5 Form A	l ₁ + 0,5 0		l ₁ + 0,5 0		l ₁ + 0,5 0		l ₁ + 0,5 0	
		€	Icon A	€	Icon A	€	Icon A	€	Icon A
01,0 - 02,4	05	16	14,17	20	15,43	25	17,46	32	18,30
01,6 - 03,0	06	16	13,90	20	15,30	25	16,74	32	17,55
02,0 - 03,5	08	16	13,37	20	14,32	25	15,50	32	17,38
03,0 - 05,0	10	16	13,15	20	14,06	25	15,16	32	17,00
04,0 - 07,2	13	-	-	20	14,28	25	15,50	32	17,98
06,0 - 08,8	16	-	-	20	14,48	25	16,22	32	17,98
07,5 - 11,3	20	-	-	20	15,66	25	17,50	32	20,03
11,0 - 16,6	25	-	-	20	16,20	25	18,36	32	21,63
15,0 - 20,0	32	-	-	20	31,01	25	34,18	32	40,71
18,0 - 27,0	40	-	-	20	33,47	25	36,74	32	42,53
26,0 - 36,0	50	-	-	20	36,74	25	40,54	32	44,41

Form B

d ₂ m5 Form B	l ₁ + 0,5 0	l ₁ + 0,5 0		l ₁ + 0,5 0		l ₁ + 0,5 0		
		€	Icon B	€	Icon B	€	Icon B	
05	16	15,63	20	17,65	25	20,41	32	21,80
06	16	15,18	20	17,25	25	19,76	32	20,95
08	16	14,64	20	15,64	25	17,73	32	19,76
10	16	14,42	20	15,59	25	17,38	32	19,34
13	-	-	20	15,80	25	17,76	32	19,90
16	-	-	20	16,97	25	18,90	32	21,66
20	-	-	20	18,01	25	19,74	32	23,97
25	-	-	20	18,87	25	21,45	32	25,91
32	-	-	20	33,02	25	38,06	32	46,49
40	-	-	20	36,55	25	41,35	32	48,07
50	-	-	20	44,39	25	48,66	32	50,14