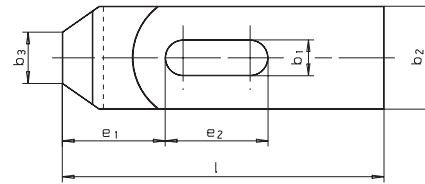
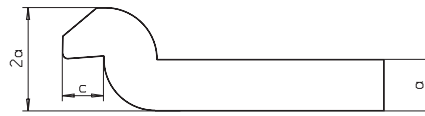
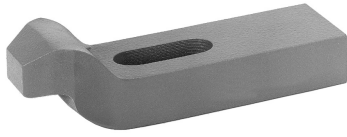


SM 1080

DIN 6316

Spanneisen, einfach gekröpft

Clamps with goose-neck



Catalog No.	b ₁	X	l	Material
SM 1080	22	X	160	St



Vergütungsstahl, lackiert
heat treated steel, varnished



mm



Aluminium



() = Abmessungen nicht nach DIN
dimensions not according to DIN

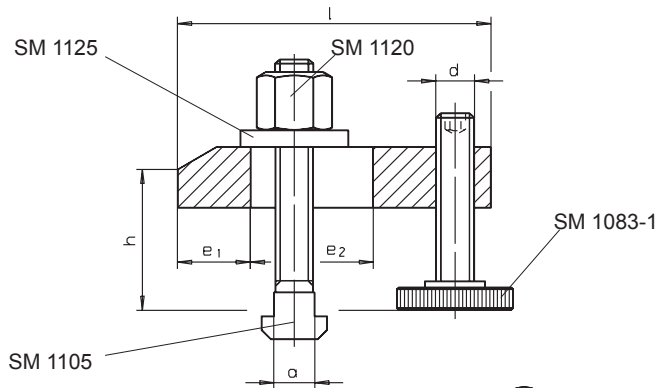


b ₁	l	€	a	b ₂	b ₃	c	e ₁	e ₂	kg
6,6	060	7,98	10	20	10	8	20	20	0,080
9,0	080	9,52	12	25	12	9	25	25	0,160
11,0	100	10,23	15	30	15	12	32	32	0,300
14,0	125	11,77	20	40	20	16	40	40	0,680
18,0	125	15,18	25	50	25	20	49		1,050
	160	18,70						50	1,400
22,0	160	27,50	30	60	30	24	55	55	2,000
	200	31,57						70	2,410
26,0	200	43,34	(35)	70	35	(28)	72	60	3,400
	250	54,34						80	4,300
33,0	250	103,95	40	80	40	40	91		5,400
	315	136,40						100	9,000
(43,0)	400	248,60	60	100	50	50	105	120	16,400

SM 1083

Spanneisen verstellbar, gerade

Adjustable plain clamp with adjusting screw



Catalog No.	Form	a
SM 1083	B	12



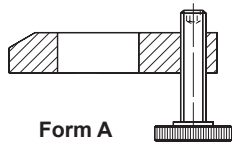
Vergütungsstahl, lackiert
heat treated steel, varnished



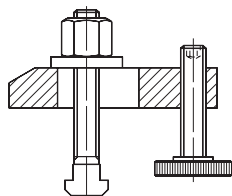
andere Größen
other dimensions



mm



Form A



Form B



a	€	h	ähnl. / like DIN 6314 b1 x l	SM 1105 T-Nutenschraube T-bolts	d	e ₁	e ₂	kg
					∅			
Form A								
10	16,83	8 - 37	11 x 80	-	M10	15	30	0,200
12 + 14	19,69	10 - 47	14 x 100	-	M12	21	40	0,560
16 + 18	29,15	13 - 52	18 x 125	-	M16	26	45	1,110
20 + 22	46,86	16 - 65	22 x 160	-	M20	30	60	2,050
24 + 28	64,45	20 - 83	26 x 200	-	M24	35	80	3,200
Form B								
10	22,80	8 - 32	11 x 80	M10 x 10 x 080	M10	15	30	0,340
12	23,21	10 - 40	14 x 100	M12 x 12 x 100	M12	21	40	0,700
14	26,73	10 - 38		M12 x 14 x 100				0,720
16	26,73	13 - 48	18 x 125	M16 x 16 x 125	M16	26	45	1,400
18	36,96			M16 x 18 x 125				1,400
20	61,05	16 - 65	22 x 160	M20 x 20 x 160	M20	30	60	2,600
22	61,05			M20 x 22 x 160				2,770