



<b>Catalog No.</b>	<b>Form</b>	<b>b<sub>1</sub></b>	<b>X</b>	<b>b<sub>2</sub></b>
SM 1137	A	12	X	10



Stahl, einsatzgehärtet, brüniert und geschliffen  
*steel, case hardened, blackened and ground*



mm



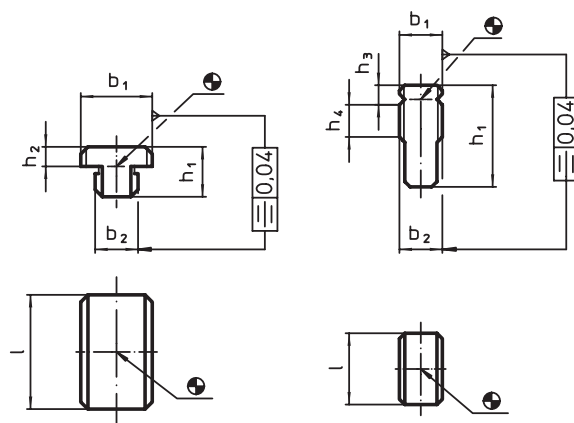
Zum Ausrichten von Vorrichtungen und Spannzangen auf Maschinentischen mit T-Nuten nach DIN 650.

*Used for locating fixtures and clamping elements on machine tables with T-slots to DIN 650. They remain as accessories with the machine. Being simply pushed into position after the fixture or clamping element has been roughly positioned, they cannot cause damage to the machine as could protruding fixed slot tenons or low slot tenons.*

**Form A:**  $b_1 > b_2$

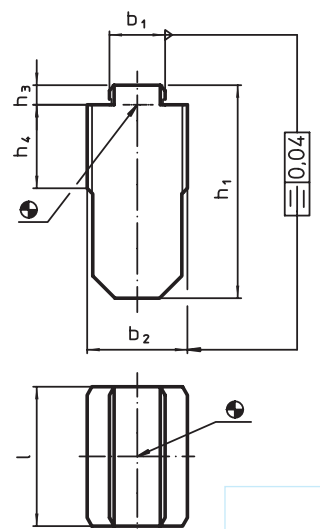
**Form B:**  $b_1 = b_2$

**Form C:**  $b_1 < b_2$

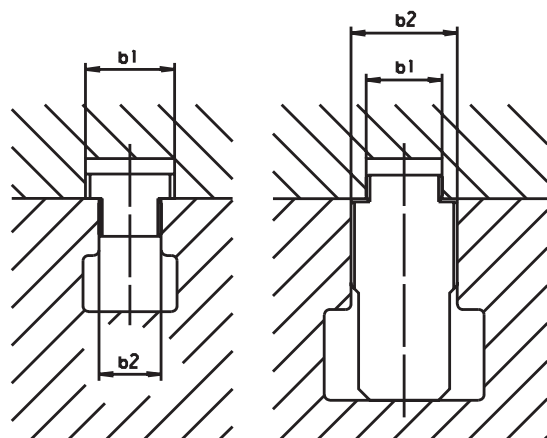


**Form A**  
 $b_1 > b_2$

**Form B**  
 $b_1 = b_2$



**Form C**  
 $b_1 < b_2$



Form	Nutennennmaß / slot		€	h <sub>1</sub>	h <sub>2</sub>	h <sub>3</sub>	h <sub>4</sub>	l	kg
	Vorrichtung device b <sub>1</sub> h <sub>6</sub>	Maschine machine b <sub>2</sub> h <sub>6</sub>							
A	12	10	17,88	12,0	3,6	-	-	20	0,020
	20	12	21,62	14,0	5,5	-	-	32	0,050
	20	14	21,62	14,0	5,5	-	-	32	0,055
	20	16	21,62	14,0	5,5	-	-	32	0,060
	20	18	21,62	14,0	5,5	-	-	32	0,065
B	12	12	14,19	28,6	-	5,5	09	20	0,045
	20	20	20,79	45,5	-	7,0	16	32	0,200
C	20	22	33,99	50,5	-	7,0	18	40	0,290
	20	28	39,71	61,5	-	7,0	24	40	0,460
	20	36	57,09	76,5	-	7,0	30	50	0,940