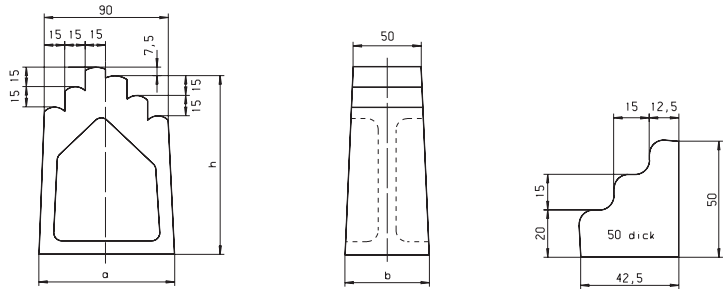
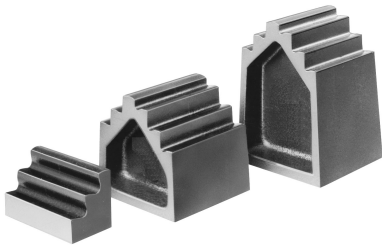


# SM 1140-1

# Treppenböcke

## Step blocks / Stepped packing blocks



Catalog No.	h
SM 1140-1	230

Spezial-Maschinenguss, lackiert, Standfläche und Treppe plangefräst  
*special machine casting, varnished, base and step faces milled*

mm

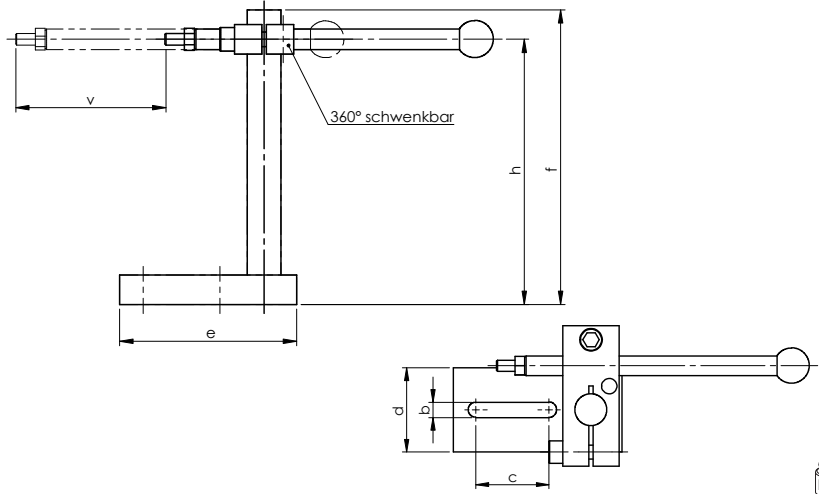
h	€	h min. - h max.	a	b	kg
050	15,51	12,5 - 50,0	42,5	50	0,500
095	24,75	57,5 - 95,0	95,0	55	1,600
140	31,79	102,5 - 140,0	100,0	60	2,000
185	43,67	147,5 - 185,0	105,0	65	2,900
230	51,92	192,5 - 230,0	110,0	70	3,600
275	58,85	237,5 - 275,0	115,0	75	4,300
320	72,60	282,5 - 320,0	120,0	80	5,200

# SM 1140-4



# Anschläge

## Limit stops



Catalog No.	Size
SM 1140-4	02

Stahl, vergütet  
*steel, tempered*

Positionierung von Werkstücken auf verschiedensten Werkzeugmaschinen und Schraubstöcken, große Höhen- und Längenverstellung, Klemmung mittels mitgeliefertem Sechskant-Quergriff-Schraubendreher.

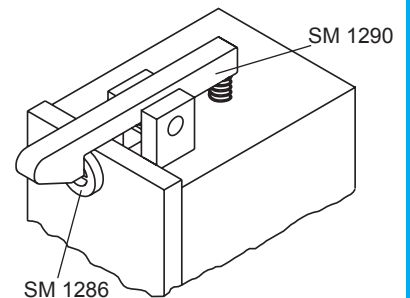
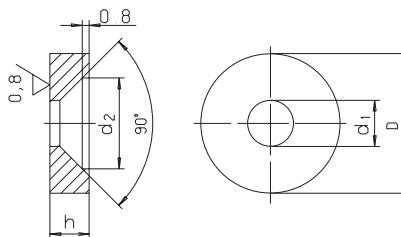
*Suitable for positioning workpieces on various machine tools and vices. It has a wide range for height- and length adjustment. Setting is done with the T-handle hexagon key attached.*

Größe size	€	b	c	d	e	f	h	v	Nut	kg
02	140,25	11	52	60	120	200	30 - 190	140	10, 12, 14, 16, 18	2,450
03	142,45	17	73	80	130	200	30 - 190	140	16, 18, 20, 22, 24, 28	3,250

# SM 1286

# Druckscheiben

## Pressing washers



Catalog No.	D
SM 1286	12

Spezialstahl  
*special steel*

gehärtet, brüniert und Unterseite geschliffen  
*hardened, blackened, background ground*

mm

D	€	d <sub>1</sub>	d <sub>2</sub>	h	kg
∅		∅	∅	+ 0,1	
12	3,68	4,3	8,3	2,5	0,002
16	3,68	5,3	10,4	4,5	0,005