

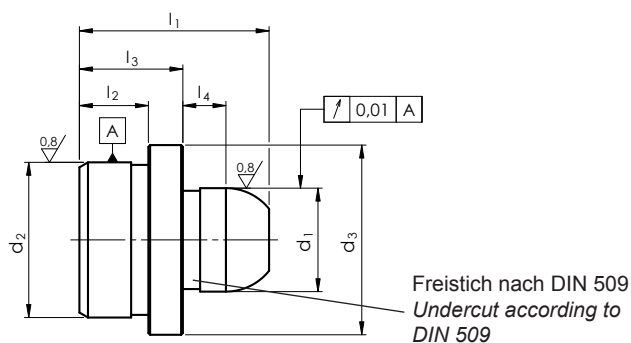
SM 1280-12

LN65622



Fixierzapfen

Locator pin



Catalog No. **d₁**
SM 1280-12 12



Spezialstahl
special steel



gehärtet und geschliffen
hardened and ground



HRc = 56 + 2

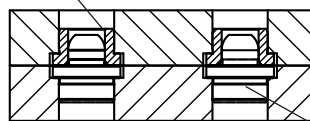


mm

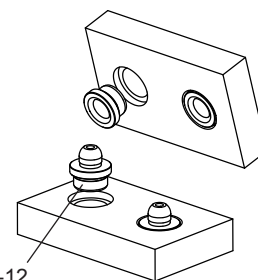


Sondermaße
special dimensions

SM1001

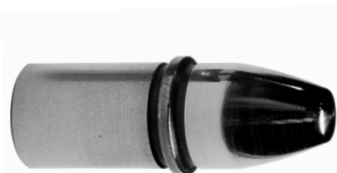


SM1280-12



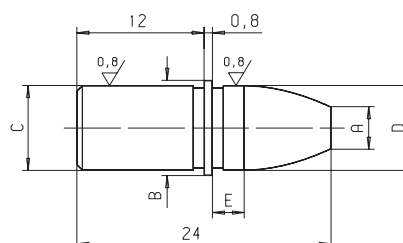
d ₁	€	d ₂	d ₃	l ₁	l ₂	l ₃	l ₄	r
m6 Ø		n6 Ø	-0,2 Ø					
06	12,10	10	14	17,5	7	10	4,5	3,5
08	13,70	12	16	18,0	7	10	4,5	4,0
12	14,85	18	22	22,0	8	12	5,0	6,0
16	15,76	26	30	30,0	12	16	7,0	8,0
20	16,90	30	35	38,0	15	20	9,0	10,0

SM 1280-2



Führungsbolzen

Dowel



Catalog No. **D**
SM 1280-2 06



Spezialstahl
special steel



gehärtet und geschliffen
hardened and ground



HRc = 56 + 2



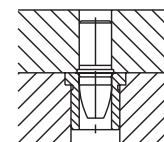
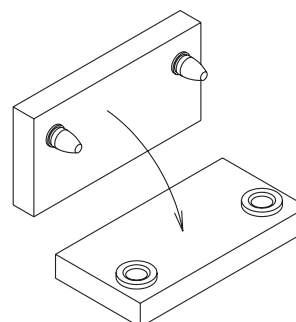
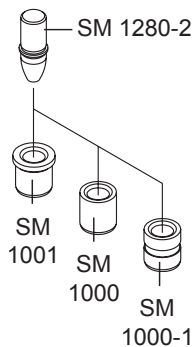
mm



Reinigen mit
SM 1306
Clean with



Kleben mit
SM 1300
Lock with



kg

D h6 Ø	€	A	B	C n6	E	kg
06	5,08	3	7	06	3,0	0,005
08	5,24	4	9	08	3,0	0,008
10	5,58	5	11	10	4,5	0,013
12	5,94	6	13	12	4,5	0,015