

	Catalog No.	d₃	d₁	Colour
	SM 1196-2	45	M12	RT



Spannteil: Stahl
Griffteil: Aluminium eloxiert
clamping part: steel
gripp: aluminium anodized



mm



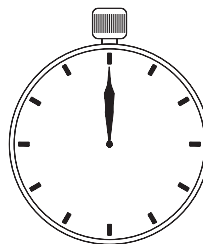
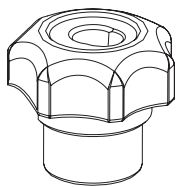
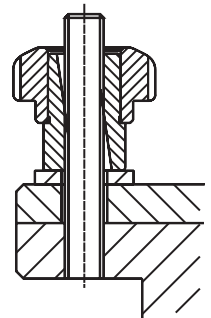
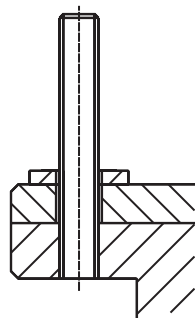
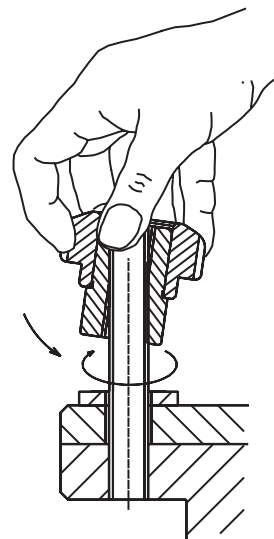
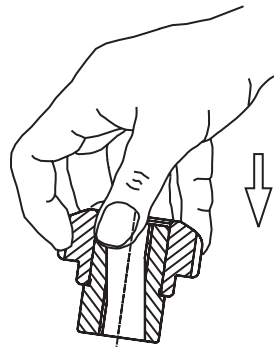
RT = rot / red
GR = grün / green
BL = blau / blue
SW = schwarz / black



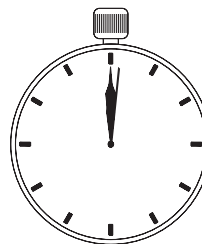
Diese Teile sind nicht für hohe Spannkraften geeignet.
These parts are not applicated for high clamping forces.



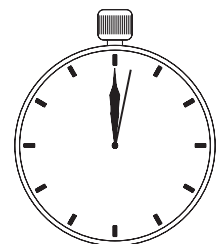
andere Materialien, Abmessungen und Farben,
Fertigung mit einer Ringbefestigung.
other materials, dimensions and colors,
version with safety-ring



0 Sekunden



1 Sekunden



2 Sekunden



d ₃ Ø	d ₁ Ø	€		d ₂ Ø	l	l ₁	kg
		RT	GR, BL, SW				
20	M05	6,42		11	16,0	6,0	0,010
23	M06	7,75		13	19,5	7,5	0,016
30	M08	9,39		17	26,0	10,0	0,041
37	M10	10,91		20	32,0	12,0	0,067
45	M12	12,67		26	39,0	15,0	0,136
60	M16	27,80		35	52,0	20,0	0,332
75	M20	48,17		44	65,0	25,0	0,646