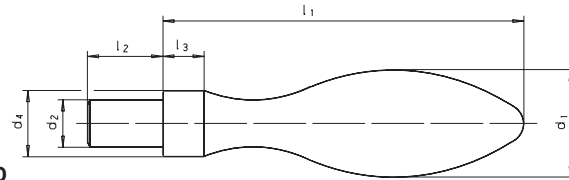
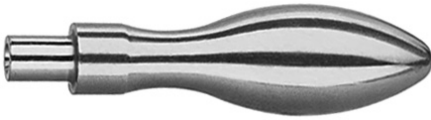


# SM 1220

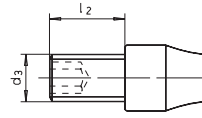
## DIN 39

# Ballengriffe - fest

## Fixed machine handles



Form D



Form E



| Catalog No. | Form | d <sub>1</sub> | Material |
|-------------|------|----------------|----------|
| SM 1220     | D    | 20             | St       |



**St:** Stahl, verzinkt, blau passiviert  
**Ku:** Thermoplast (Polyamid PA) schwarz matt (nur Form E Größen 20, 25, 32) temperaturbeständig bis 100° C  
 Gewindestift: Stahl, brüniert

**St:** steel, zinc plated, blue passivated  
**Ku:** Technopolymer (Polyamide PA) - only sizes 20, 25, 32, type E, black, matt temperature resistant up to 100° C, shaft: steel blackened



Reinigen mit  
**SM 1306**  
 Clean with  
 Seite 360



Kleben mit  
**SM 1301**  
 Lock with  
 Seite 357



mm



**Form D:** zylindrischer Zapfen / cylindrical bolt

**Form E:** Gewindestapfen / threaded bolt



RoHS  
 Konform  
 Compliant

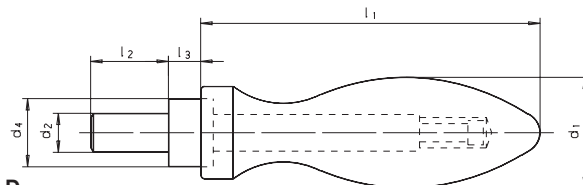
| d <sub>1</sub><br>Ø | Form D<br>d <sub>2</sub> h8<br>Ø | Form E<br>d <sub>3</sub><br>Ø | €        |    |      | d <sub>4</sub><br>h13<br>Ø | l <sub>1</sub> | l <sub>2</sub> | l <sub>3</sub> | SW<br>innen<br>Inside | kg    |       |
|---------------------|----------------------------------|-------------------------------|----------|----|------|----------------------------|----------------|----------------|----------------|-----------------------|-------|-------|
|                     |                                  |                               | Material |    |      |                            |                |                |                |                       | St    | Ku    |
|                     |                                  |                               | St       | Al | Ku   |                            |                |                |                |                       |       |       |
| 16                  | 07                               | M06                           | 2,49     |    | -    | 10                         | 50             | 11             | 7              | 3                     | 0,042 | -     |
| 20                  | 08                               | M08                           | 3,33     |    | 3,26 | 13                         | 64             | 13             | 8              | 4                     | 0,088 | 0,027 |
| 25                  | 10                               | M10                           | 4,92     |    | 3,99 | 16                         | 80             | 14             | 10             | 5                     | 0,170 | 0,053 |
| 32                  | 13                               | M12                           | 8,88     |    | 5,20 | 20                         | 100            | 21             | 13             | 6                     | 0,345 | 0,106 |
| 36                  | 16                               | M16                           | 12,27    |    |      | 22                         | 112            | 26             | 14             | 8                     | 0,508 | -     |

# SM 1221

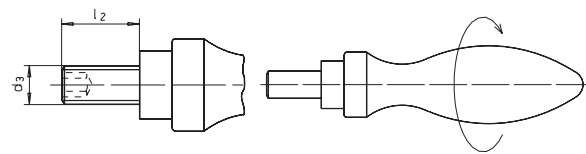
## DIN 98

# Ballengriffe - drehbar

## Revolving turning machine handles



Form D



Form E



| Catalog No. | Form | d <sub>1</sub> | Material |
|-------------|------|----------------|----------|
| SM 1221     | D    | 20             | St       |



**St:** Stahl, verzinkt und blau passiviert  
**Al:** Aluminium, hochglanzpoliert  
**Ku:** Kunststoff Thermoplast (Polyamid PA) schwarz matt, temperaturbeständig bis 110° C  
 Achsteil: Stahl, verzinkt, blau passiviert unmontiert

**St:** steel, zinc plated, blue passivated  
**Al:** aluminium, polished  
**Ku:** plastic Technopolymer (Polyamide PA) temperaturresistant up to 110°, black, matt finish  
 spindle: steel zinc plated, blue passivated supplied unassembled



Reinigen mit  
**SM 1306**  
 Clean with  
 Seite 360



Kleben mit  
**SM 1301**  
 Lock with  
 Seite 357



**Form D:** zylindrischer Zapfen / cylindrical bolt

**Form E:** Gewindestapfen / threaded bolt



mm



| d <sub>1</sub><br>Ø | Form D<br>d <sub>2</sub> h8<br>Ø | Form E<br>d <sub>3</sub><br>Ø | €        |       |      | d <sub>4</sub><br>h13<br>Ø | l <sub>1</sub> | l <sub>2</sub> | l <sub>3</sub> | SW<br>innen<br>Inside | kg    |       |
|---------------------|----------------------------------|-------------------------------|----------|-------|------|----------------------------|----------------|----------------|----------------|-----------------------|-------|-------|
|                     |                                  |                               | Material |       |      |                            |                |                |                |                       | St    | Al    |
|                     |                                  |                               | St       | Al    | Ku   |                            |                |                |                |                       |       |       |
| 16                  | 7                                | M06                           | 5,57     | 6,26  | 2,63 | 10                         | 49             | 11             | 5,5            | 3                     | 0,054 | 0,029 |
| 20                  | 8                                | M08                           | 6,28     | 7,63  | 3,17 | 13                         | 61             | 13             | 6,0            | 4                     | 0,099 | 0,063 |
| 25                  | 10                               | M10                           | 8,06     | 9,94  | 4,16 | 16                         | 75             | 14             | 8,0            | 5                     | 0,196 | 0,110 |
| 32                  | 13                               | M12                           | 12,54    | 13,73 | 5,73 | 20                         | 95             | 21             | 10,5           | 6                     | 0,383 | 0,212 |
| 36                  | 16                               | M16                           | 15,69    | 16,62 | -    | 22                         | 106            | 26             | 11,0           | 8                     | 0,552 | 0,300 |