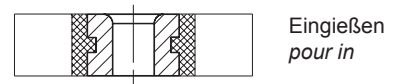
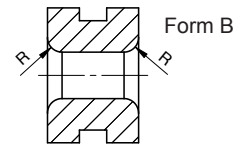
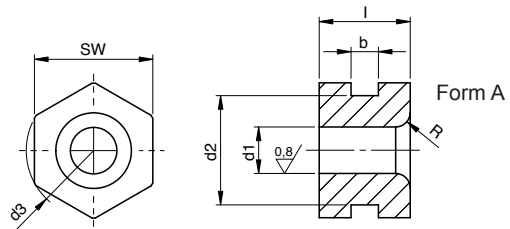
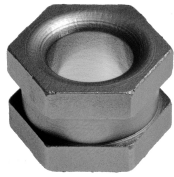


# SM 1000-2

# Sechskantbohrbuchsen Hexagon drill bushes



Catalog No.	Form	d <sub>1</sub>	X	I
SM 1000-2	A	05.00	X	10



Spezialstahl  
special steel



gehärtet und geschliffen  
hardened and ground



mm



Form B = +10%



HRc = 63 - 65



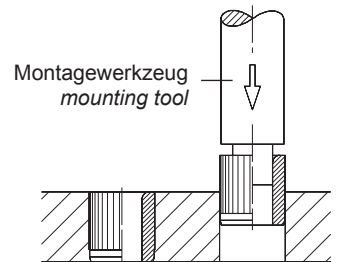
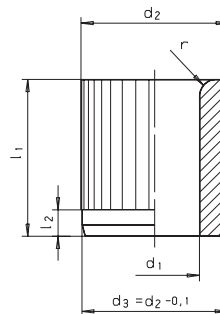
d <sub>1</sub> F7	SW	d <sub>3</sub>	b	R	I	€
∅ 01,10 - 01,80	8	-0,05	3	1,2	08	☎
01,90 - 02,50		9,2				
02,60 - 03,20	9	10,2	1,6	10		
03,30 - 04,00	11	12,5				
04,10 - 05,00	13	14,8				
05,10 - 06,00	13	14,8				



d <sub>1</sub> F7	SW	d <sub>3</sub>	b	R	I	€
∅ 06,10 - 08,00	15	17,3	4	2,0	12	☎
08,10 - 10,00	17	19,6		2,5		
10,10 - 12,00	22	24,8	6	4,0	16	
12,10 - 15,00	24	27,7				
15,10 - 18,00	27	31,1				
18,10 - 22,00	32	36,8	8	6	18	

# SM 1000-3

# Rändelbuchsen Knurled bushes



Catalog No.	Form	d <sub>1</sub>	X	I <sub>1</sub>
SM 1000-3	A	02.00	X	06



Quantity discount rate				
Ab Menge	50 - 99	100 - 199	200 - 499	500 <
Rabatt	5%	15%	20%	30%

Pro Abmessung / Per size



∅ 2,0 - 12,0 mm



Spezialstahl  
special steel



gehärtet und geschliffen  
hardened and ground



HRc = 63 - 65



mm



andere Materialien und  
Abmessungen  
other material and dimen-  
sions



Form B = +10%  
Besonders geeignet für Montage in Alu,  
Kunststoff oder Holzmaterialien durch  
eindrücken oder kleben.

*Especially suitable for mounting in  
aluminium, plastic or wood materials by  
push or glue.*



Reinigen mit  
SM 1306  
Clean with



Kleben mit  
SM 1300  
in Aluminium mit  
SM 1301  
Lock with



d <sub>1</sub> F7	d <sub>2</sub>	€			I <sub>2</sub>			r
		∅	-0,05					
02,00 - 02,60	05	06	1,94	09	-	1,2	1,8	-
02,70 - 03,30	06	08	2,00	12	16	1,6	2,4	3,2
03,40 - 04,00	07		2,05					
04,10 - 05,00	08		2,19					
05,10 - 06,00	10	10	2,23	16	20	2,0	3,2	4,0
06,10 - 08,00	12		2,51					
08,10 - 10,00	15	12	2,74	20	25	2,4	4,0	5,0
10,10 - 12,00	18		3,14					