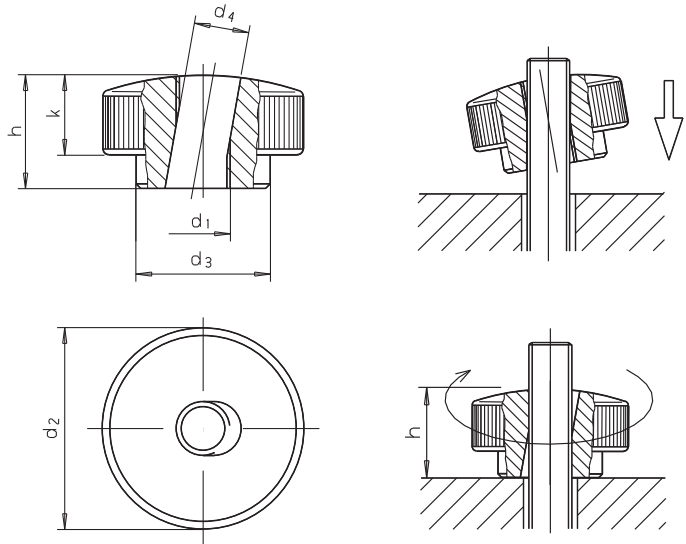


SM 1259

Schnellspanmuttern Quick release / Quick gripping knurled nuts



Catalog No. **d₁**
SM 1259 M06





Stahl, Güte 5, verzinkt
steel, grade 5, zinc plated



mm



 = SM 1196 [252](#)

 = SM 1196-2 [253](#)

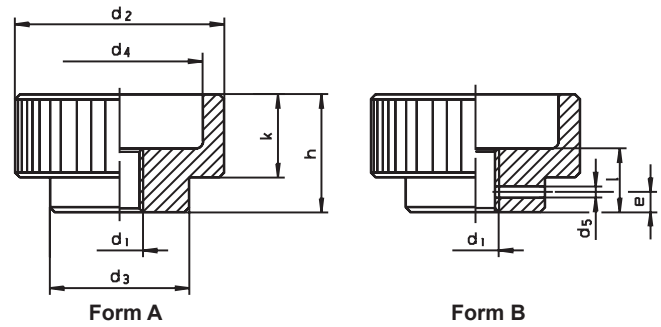


d ₁ Für Schrauben For screws	€	d ₂ ∅	h	d ₃ ∅	d ₄ ∅	k	kg
M05	3,44	20	12	14	5,4	8	0,026
M06	3,38	24	14	16	6,7	10	0,037
M08	4,61	30	17	20	8,7	12	0,074
M10	5,24	36	20	28	11,0	14	0,135
M12	6,58	40	24	32	12,6	16	0,180

5

SM 1260 DIN 6303

Rändelmuttern Knurled nuts



Catalog No. **Form** **d₁** **Material**
SM 1260 A M08 Nirol




- : Stahl, verzinkt
steel, zinc plated

Nirol 



mm



d ₁ ∅	€				d ₂ ∅	d ₃ ∅	d ₄ ∅	d ₅ H11	Zyl.St. Pins DIN 7	e	h	k	l	kg
	Form A		Form B											
	Stahl	Nirol	Stahl	Nirol										
M05	0,88	2,00	1,10		20	14	15	1,5	1,5 x 14	2,5	12	08	07	0,016
M06	1,09	2,36	1,31		24	16	18	1,5	1,5 x 16	2,5	14	10	08	0,027
M08	1,52	3,55	1,87		30	20	24	2,0	2,0 x 20	3,0	17	12	10	0,050
M10	2,31	4,75	2,62		36	28	30	3,0	3,0 x 28	4,0	20	14	12	0,083
M12	3,04	6,81	3,43		40	32	34	4,0	4,0 x 32	4,0	24	16	16	0,123



Form A: ohne Stiftloch
Form B: mit Stiftloch
Stifte: DIN 7 oder SM 1020
Stiftloch beim Zusammenbau durchbohren und reiben.

Form A: without dowel hole
Form B: with dowel hole
pins: DIN 7 oder SM 1020
Bore and rub the dowel hole when mounting.