

Catalog No.	d	X	l
SM 1121	10.0	X	14



HSS, gehärtet
HSS, hardened



andere Abmessungen
other dimensions



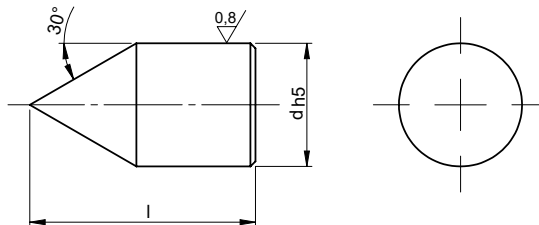
mm



RoHS
Konform
Compliant



d h ₆	l	d ₁	d ₂ -0,2	max. Belastung/ max. pressure [kN]	kg
Ø 06,0	10	M03	0,5	10	0,002
Ø 08,0	12	M04	0,5		0,004
Ø 10,0	14	M05	0,6		0,007
Ø 12,0	16	M06	1,5		0,012
Ø 12,7	16	M06	1,5		0,014



Catalog No.	d	X	l
SM 1122	12.0	X	22



Hartmetall
carbide



andere Abmessungen
other dimensions



mm



RoHS
Konform
Compliant

d h ₅	l	kg
Ø 05,0	12	0,003
Ø 06,0	12	0,004
Ø 07,0	14	0,006
Ø 08,0	16	0,008
Ø 10,0	20	0,016
Ø 11,0	20	0,019
Ø 12,0	22	0,026
Ø 14,0	22	0,031
Ø 15,0	22	0,034
Ø 16,0	26	0,049
Ø 18,0	30	0,072
Ø 20,0	32	0,093
Ø 22,0	32	0,106
Ø 23,0	32	0,113
Ø 25,0	40	0,182
Ø 28,0	42	0,231
Ø 30,0	45	0,284