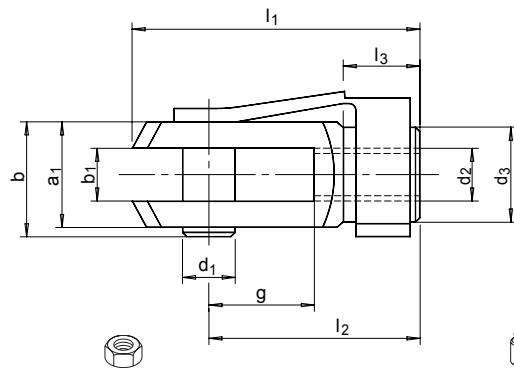
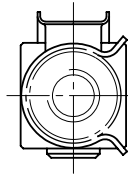


SM 1230

DIN 71752

Gabelgelenk mit Federklappbolzen

Fork joint with snap-on spring



Catalog No.	d ₁	X	g
SM 1230	04	X	08




Gabelkopf, Bolzen: Automatenstahl
 Feder: Federbandstahl
 verzinkt, chromatiert
head and bolt: steel
circlip: steelplate zinc plated, blue passivated



mm



Linksgewinde, blank und geölt, phosphatiert
 und geölt
*left hand thread, bare and oiled, phosphated
 and oiled*

 (nur Gabelkopf in 1.4305, nicht
 der Federklappbolzen / *only head
 in 1.4305, not the snap-on spring*)



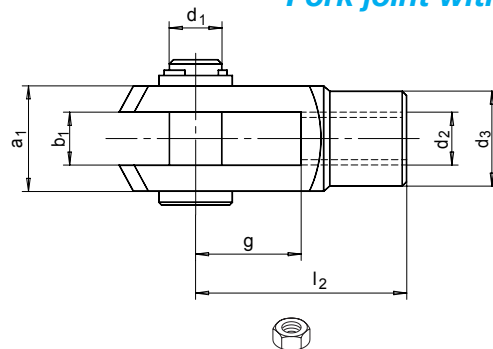
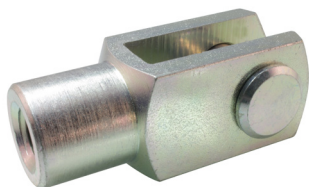
d ₁ H9/ h11 ∅	g	a ₁	b ₁ B13	d ₂ ∅	d ₃ ∅	l ₁	l ₂	l ₃	kg
04	08	08	04	M04	08	21	16	6,0	0,007
05	10	10	05	M05	09	26	20	7,5	0,012
05	20	10	05	M05	09	36	30	7,5	0,016
06	12	12	06	M06	10	31	24	9,0	0,020
06	24	12	06	M06	10	43	36	9,0	0,027
08	16	16	08	M08	14	42	32	12,0	0,047
08	32	16	08	M08	14	58	48	12,0	0,066
10	20	20	10	M10	18	52	40	15,0	0,093
10	40	20	10	M10	18	72	60	15,0	0,136
12	24	24	12	M12	20	62	48	18,0	0,155
12	48	24	12	M12	20	86	72	18,0	0,210
14	28	27	14	M14	24	72	56	22,5	0,223
14	56	27	14	M14	24	101	85	22,5	0,308
16	32	32	16	M16	26	83	64	24,0	0,352
16	64	32	16	M16	26	115	96	24,0	0,482
20	40	40	20	M20	34	105	80	30,0	0,652

SM 1231

DIN 71751

Gabelgelenk mit Splintbolzen

Fork joint with bolt



Catalog No.	d ₁	X	g
SM 1231	04	X	08



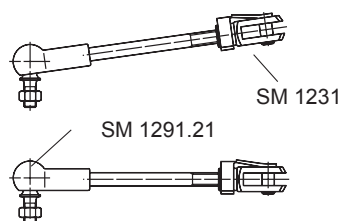
Gabelkopf, Bolzen: Automatenstahl
 Feder: Federbandstahl
 verzinkt, chromatiert
head and bolt: steel
circlip: steelplate zinc plated, blue passivated



mm



Linksgewinde, blank und geölt, phosphatiert und geölt
left hand thread, bare and oiled, phosphated and oiled



d ₁ H9/ h11 ∅	g	a ₁	b ₁	d ₂ ∅	d ₃ ∅	l ₂	kg
04	08	08	04	M04	08	16	0,007
04	16	08	04	M04	08	24	0,009
05	10	10	05	M05	09	20	0,011
05	20	10	05	M05	09	30	0,015
06	12	12	06	M06	10	24	0,019
06	24	12	06	M06	10	36	0,026
08	16	16	08	M08	14	32	0,046
08	32	16	08	M08	14	48	0,064
10	20	20	10	M10	18	40	0,092
10	40	20	10	M10	18	60	0,134
12	24	24	12	M12	20	48	0,155
12	48	24	12	M12	20	72	0,209
14	28	27	14	M14	24	56	0,229
14	56	27	14	M14	24	85	0,309
16	32	32	16	M16	26	64	0,357
16	64	32	16	M16	26	96	0,485
20	40	40	20	M20	34	80	0,650