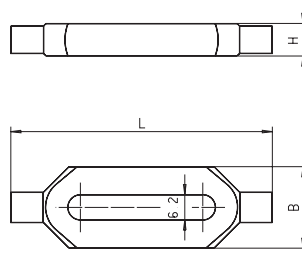


# SM 1050-06 Doppelspanneisen mit rundem Spannansatz Double clamp with rounded peg



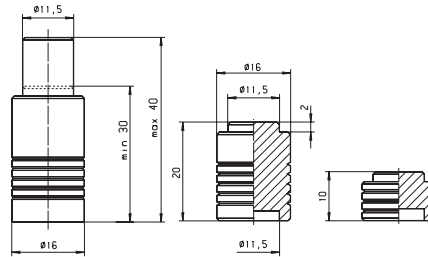
Aluminium F48-55, blau eloxiert  
aluminium F48-55, blue anodized



Catalog No.	L
SM 1050-06	75

L	B	H	kg
50	20	8	0,015
75	20	8	0,023

# SM 1050-07 Spannbock Supporter, clamping bock



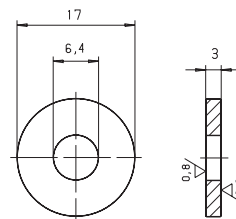
Aluminium F48-55, blau eloxiert  
aluminium F48-55, blue anodized



Catalog No.	L
SM 1050-07	10

L	kg
10	0,004
20	0,008
30 - 40	0,014

# SM 1050-08 Unterlegscheibe plan geschliffen Washer, grinded



Vergütungsstahl  
heat-treated steel



andere Abmessungen und Werkstoffe (SM1125-1)  
other dimensions and materials (SM1125-1)



Catalog No.
SM 1050-08

kg
0,005

# SM 1050-09 Stehbolzen M06 Bolt



Stahl, vergütet, 10.9, unverzinkt  
heat-treated steel, grade 10.9, not zinc plated



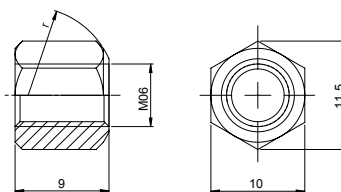
andere Abmessungen und Werkstoffe (SM1100)  
other dimensions and materials



Catalog No.	L
SM 1050-09	32

L	M	kg
32	6	0,007
50	6	0,011
80	6	0,018

# SM 1050-10 Mutter M06 vergütet Nut



Vergütungsstahl  
heat-treated steel



andere Abmessungen und Werkstoffe (SM1120)  
other dimensions and materials (SM1120)



Catalog No.
SM 1050-10

kg
0,005

Für alle Artikel gilt:



mm



andere Abmessungen und Werkstoffe  
other dimensions and materials

