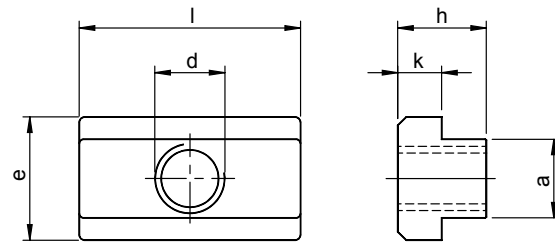


SM 1134



Muttern für T-Nuten, lang

Nuts for T-slots, long



Catalog No.	d	X	Size
SM 1134	M10	X	12



bis M12



ab M14



Vergütungsstahl, vergütet, Güte 10, brüniert
heat-treated steel, tempered, grade 10, blackened



mm

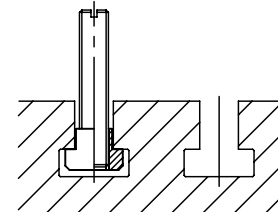


Diese lange Form eignet sich besonders zum Schonen der Tischnuten.

This extended form safeguards the T-slots of precision machine tables.



RoHS Konform Compliant



d	x	Größe	a	e	h	k	l	kg
∅		size						
M05	x	06	5,6	10	8	4	20	0,008
M06	x	08	7,6	13	10	6	26	0,020
M08	x	10	9,6	15	12	6	30	0,030
M10	x	12	11,6	18	14	7	36	0,050
M12	x	14	13,6	22	16	8	44	0,082
M14	x	16	15,6	25	18	9	50	0,120
M16	x	18	17,6	28	20	10	56	0,170
M18	x	20	19,6	32	24	12	64	0,260
M20	x	22	21,6	35	28	14	70	0,360
M24	x	28	27,6	44	36	18	88	0,742
M30	x	36	35,5	54	44	22	108	1,395

SM 1135

DIN 508 / ISO 299



Muttern für T-Nuten

Nuts for T-slots



Catalog No.	d	X	Size	Material
SM 1135	M20	X	22	



M04 x 05 - M12 x 14



M12 x 16 - M20 x 22



ab M20 x 24



Vergütungsstahl, vergütet, Güte 10, brüniert / heat-treated steel, tempered, grade 10, blackened



* Abmessungen sind nicht in der DIN enthalten.

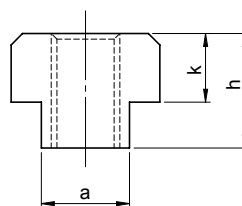
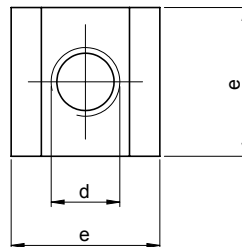
** These dimensions are not part of the german DIN.*



Güte 8, blank, Grade 8, shiny,



mm



d	x	Größe	a	e	h	k	kg
∅		size					
M04	x	05	4,6	9	6,5	3,0	0,002
M05	x	06	5,6	10	8,0	4,0	0,004
M06	x	08	7,6	13	10,0	6,0	0,008
* M06	x	10	9,6	15	12,0	6,0	0,014
M08	x	10					0,013
* M08	x	12	11,6	18	14,0	7,0	0,023
M10	x	12					0,022
* M08	x	14	13,6	22	16,0	8,0	0,041
* M10	x	14					0,037
M12	x	14					0,034
* M12	x	16	15,6	25	18,0	9,0	0,054
* M14	x	16					0,050
* M12	x	18	17,6	28	20,0	10,0	0,082
* M14	x	18					0,074
M16	x	18					0,070
* M12	x	20	19,6	32	24,0	12,0	0,130
* M16	x	20					0,116
* M18	x	20					0,110
* M12	x	22	21,6	35	28,0	14,0	0,190
* M18	x	22					0,163
M20	x	22					0,150
* M20	x	24	23,6	40	32,0	16,0	0,238
* M22	x	24					0,222
M24	x	28	27,6	44	36,0	18,0	0,330
* M27	x	32	31,5	50	40,0	20,0	0,460
M30	x	36	35,5	54	44,0	22,0	0,590
M36	x	42	41,5	65	52,0	26,0	1,003
M42	x	48	47,5	75	60,0	30,0	1,499
M48	x	54	53,4	85	70,0	34,0	2,102