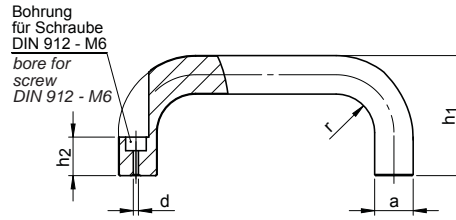


SM 1269-31

Bügelgriff Aluminium Cabinet "U"-handle, aluminium



Catalog No.	b	X	l ₁	Colour
SM 1269-31	26	X 116	SW	

Aluminium
BL = blank, gleitgeschliffen / bright, tumbled
EL = eloxiert, naturfarben / anodized, natural colour

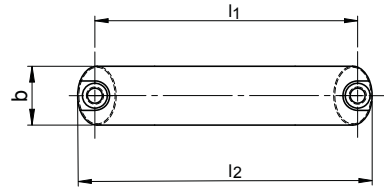
kunststoffbeschichtet, strukturmatt / plastic coated, textured finish:
RT = rot / red RAL 3000
SW = schwarz / black RAL 9005
SR = silber / silver RAL 9006

ähnlich SM1269-3, Befestigung der Griffe von der Bedienseite
equal to SM 1269-3, You can fix them from the operator side.

Sonderlängen, UV-beständig in schwarz.
special lengths, highly weather-resistant and UV-protective powder coating system in black.



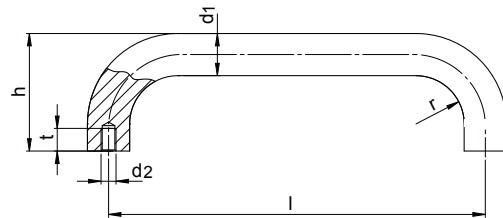
mm



b	l ₁ ± 0,25		a	d ∅	h ₁	h ₂	r	l ₂	kg
	BL / EL	RT / SW / SR							
20	100	100	13	5,4	49	19	13	112	0,080
	112	112						124	0,082
	120	120						132	0,090
	128	128						140	0,100
	160	160			172	0,110			
26	116	116	17	6,4	55	17	17	130	0,147
	120	120						134	0,150
	132	132						146	0,160
	164	164						178	0,192
	179	179			193	0,218			
	196	196			210	0,229			
						57			

SM 1269-32

Bügelgriff Aluminium Cabinet "U"-handle, aluminium



Catalog No.	d ₁	X	l	Material
SM 1269-32	20	X 200	SW	

Aluminium
BL = blank, gleitgeschliffen / bright, tumbled
kunststoffbeschichtet, strukturmatt / plastic coated, textured finish:
SW = schwarz / black RAL 9005
SR = silber / silver RAL 9006

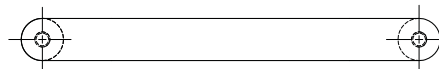
Bügelgriffe d₁ = 28 sind aus Alu-Rohr mit Wandstärke 4 mm gefertigt, Gewindebuchse Aluminium.

Cabinet „U“ handles d₁ = 28 are manufactured out of aluminum tubing with a wall thickness of 4 mm and fitted with threaded aluminum bushings.

Sonderlängen, UV-beständig in schwarz.
special lengths, highly weather-resistant and UV-protective powder coating system in black.



mm



d ₁ ∅	l ± 0,25		d ₂ ∅	h	r	t min.	kg
	BL / SW / SR						
20	200	M08	68	22	15	15	0,240
	250	M08					0,285
	300	M08					0,330
	350	M08					0,350
28	250	M10	78	32	15	15	0,290
	300	M10					0,330
	350	M10					0,375
	400	M10					0,415

