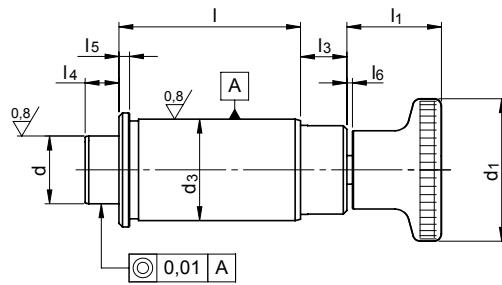
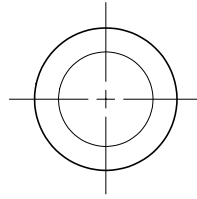
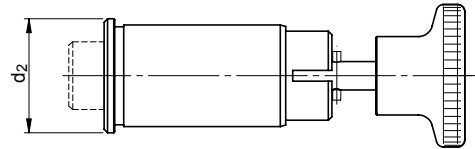


# SM 1274-7

# Teilkolben mit Feder, zylindrisch Indexing plunger, cylindrical



Form A



Form B



Catalog No. Form d  
SM 1274-7 A 19



Stahl, Griff aus Stahl, brüniert  
steel, grip from steel, blackened



gehärtet und geschliffen  
hardened and ground



mm



Form A: Standard-Ausführung  
standard  
Form B: arretierbare Entriegelung  
with lockable unlocking



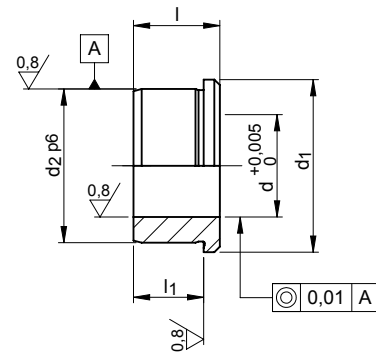
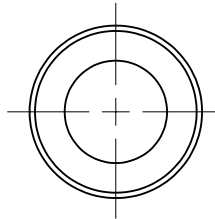
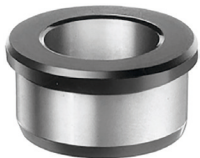
RoHS  
Konform  
Compliant



d	d <sub>1</sub>	d <sub>2</sub>	d <sub>3</sub>	l	l <sub>1</sub>	l <sub>3</sub>	l <sub>4</sub>	l <sub>5</sub>	l <sub>6</sub>	kg
13	25	22	19,0	35	24	13	9,5	3	1,5	0,120
19	25	32	28,5	51	24					0,335
25	31	42	38,0	58	28,5					0,635

# SM 1274-8

# Teilkolbenbuchse zylindrisch Cylindrical bushing for indexing plunger



Catalog No. d  
SM 1274-8 19



Stahl  
steel



gehärtet und geschliffen  
hardened and ground



mm



RoHS  
Konform  
Compliant



d	d <sub>1</sub>	d <sub>2</sub>	l	l <sub>1</sub>	für / for Teilkolben indexing plunger	kg
13	22	19,0	13	10	SM1274-7A/B13	0,015
19	32	28,5	16	13	SM1274-7A/B19	0,045
25	42	38,0	19	16	SM1274-7A/B25	0,100



Reinigen mit  
SM 1306  
Clean with



Kleben mit  
SM 1300  
Lock with

