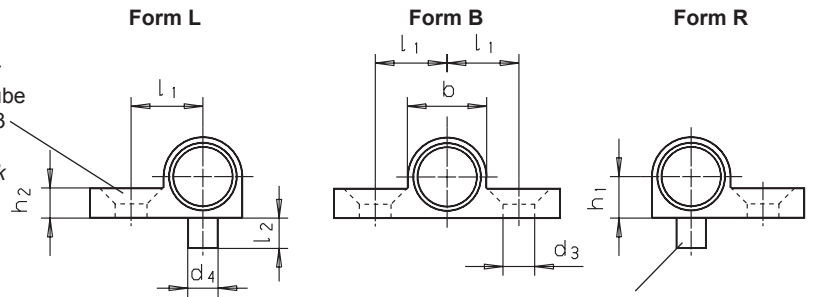
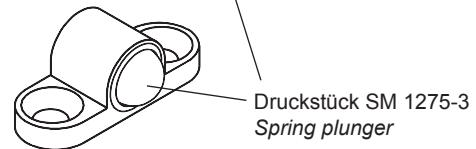
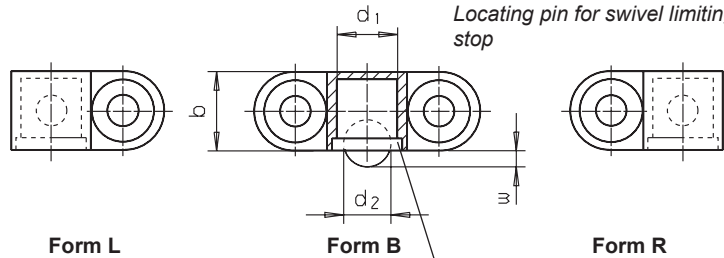




Bohrung für Senkschraube SM 1291-03
Hole for countersunk screw



Bolzen zur Verdrehsicherung
Locating pin for swivel limiting stop



Druckstück SM 1275-3
Spring plunger

Catalog No.	Form	d ₁
SM 1275-30	B	06

Zink-Druckguss, vernickelt
zinc pressure die casting, nickel plated

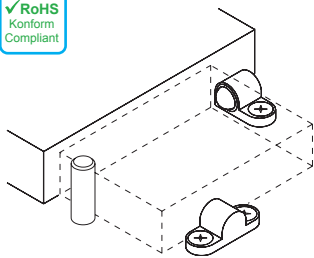
mm

Form B: Befestigungsschraube beidseitig
Form L: Befestigungsschraube links
Form R: Befestigungsschraube rechts

Diese Druckstückhalter vereinfachen die Anwendung der Druckstücke SM 1275-3.

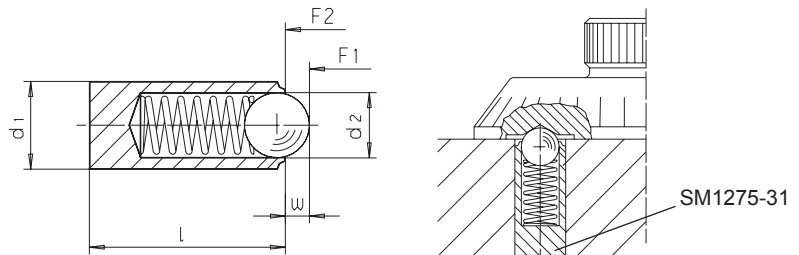
Form B: fixing screw both sides
Form L: fixing screw left
Form R: fixing screw right

These Holders simplify the use of spring plungers SM 1275-3.



* = statistischer Mittelwert / statistical average value

d ₁ ∅ -0,05 für / for SM1275-3	d ₂ ∅ Kugel ball	d ₃ ∅ für / for SM1291-03	d ₄ ∅ -0,05	b	h ₁ ± 0,05	h ₂	l ₁ ± 0,05	l ₂	Federkraft / spring load [N] ≈*	W -0,1 Federweg compression	kg
06	5,0	3,2 M03	3	8,5	4,25	3,20	7,50	3,00	6,5 - 13,0	1,5	0,005
08	6,5	4,3 M04	4	10,5	5,25	4,20	9,50	4,00	8,0 - 18,0	1,8	0,005



Catalog No.	d ₁
SM 1275-31	03.0

Hülse: Edelstahl rostfrei 1.4305
Kugel: Edelstahl rostfrei, gehärtet
Feder: Edelstahl rostfrei

housing: stainless steel 1.4305
ball: stainless steel, hardened
spring: stainless steel

mm

Zur Arretierung sowie als An- und Abdruckstift.
Temperatureinsatzbereich: max. + 250 °C.
To be used for locating or for applying pressure or lifting off.
Temperature range up to 250 °C.



* = statistischer Mittelwert / statistical average value

d ₁ ∅ ± 0,04	l	w	d ₂ ∅	Druck / Pressure [N] ≈*		kg
				F ₁	F ₂	
02.0	3,5	0,30	1,0	0,8	1,5	0,001
02.5	5,0	0,40	1,5	2,8	4,7	0,001
03.0	7,0	0,65	2,0	4,5	7,5	0,001
03.5	9,0	0,80	2,5	8,5	14,0	0,001
04.0	11,0	0,90	3,0	8,0	14,0	0,001
04.5	12,0	0,95	3,2	9,5	16,5	0,001
05.0	13,0	1,00	3,5	11,0	18,0	0,001
05.5	14,0	1,20	4,0	15,5	25,0	0,002
06.0	15,0	1,50	4,5	18,0	31,0	0,002
08.0	18,0	2,00	6,0	24,0	45,0	0,005
10.0	20,0	2,50	8,0	26,0	49,0	0,008
12.0	22,0	3,50	10,0	41,0	86,0	0,012

