

**Catalog No.** metr.  
**SM 1125** M30



Stahl, gehärtet (1200-1400 N/mm<sup>2</sup>)  
steel, tempered (1200-1400 N/mm<sup>2</sup>)



mm



\* Abmessungen sind nicht in der DIN enthalten.  
\* These dimensions are not part of the german DIN.



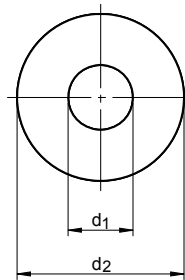
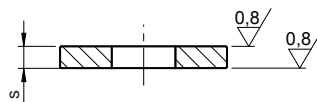
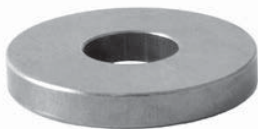
RoHS  
Konform  
Compliant



metr.	Zoll / inch	d <sub>1</sub>	d <sub>2</sub>	s	kg
∅	∅	∅	∅		
M06	1/4	6,4	17	03	0,005
M08	5/16	8,4	23	04	0,010
M10	3/8	10,5	28	04	0,016
M12	1/2	13,0	35	05	0,035
M14*	-	15,0	40	05	0,040
M16	5/8	17,0	45	06	0,060
M18*	-	19,0	45	06	0,060
M20	3/4	21,0	50	06	0,073
M22*	7/8	23,0	50	08	0,092
M24	7/8	25,0	60	08	0,170
M27*	1 1/16	28,0	68	10	0,210
M30	1 1/8 - 1 3/16	31,0	68	10	0,230
M36*	1 1/4 - 1 3/8	38,0	80	10	0,350
M42*	1 1/2	44,0	100	15	0,670
M48*	1 3/4	50,0	100	17	0,920

**SM 1125-1**  
ähnl. DIN 6340

**Passscheibe** beidseitig plangeschliffen  
Adjusting washer, ground



**Catalog No.** metr. X d<sub>2</sub> X s  
**SM 1125-1** M08 X 20 X 03



Stahl, gehärtet und beidseitig plangeschliffen  
steel, hardened and on both sides surface grinded



mm



RoHS  
Konform  
Compliant



metr.	d <sub>2</sub>	s	Zoll / inch	d <sub>1</sub>	kg
∅	∅	± 0,01	∅	∅	
M04	10	03	1/8	4,4	0,001
M04	12	03	1/8	4,4	0,002
M04	12	09	1/8	4,4	0,008
M05	14	03	3/16	5,4	0,003
M05	14	09	3/16	5,4	0,009
M05	16	03	3/16	5,4	0,004
M05	16	09	3/16	5,4	0,012
M06	17	03	1/4	6,4	0,005
M08	20	03	5/16	8,4	0,006
M08	20	09	5/16	8,4	0,018
M08	23	04	5/16	8,4	0,010
M08	26	03	5/16	8,4	0,011
M08	26	09	5/16	8,4	0,033
M10	28	04	3/8	10,5	0,016
M10	30	04	3/8	10,5	0,019
M10	30	10	3/8	10,5	0,048
M10	42	04	3/8	10,5	0,040
M10	42	10	3/8	10,5	0,101
M12	35	05	1/2	13,0	0,035
M14	40	05	9/16	15,0	0,040
M16	45	06	5/8	17,0	0,060
M18	45	06	-	19,0	0,060
M20	50	06	3/4	21,0	0,073