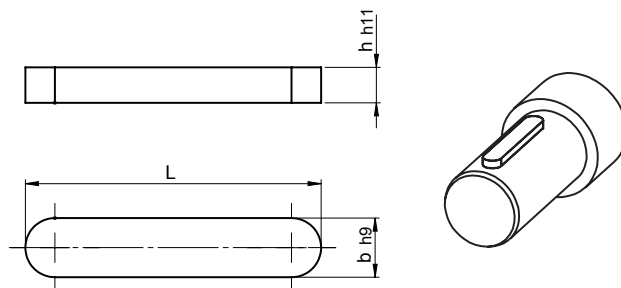


SM 1137-3

DIN 6885 A / ISO 773

Passfeder

Parallel key



Catalog No.	b	X	h	X	L	Material
SM 1137-3	08	X	05	X	20	ST

ST: Stahl C45 (entspr. St 60)
ST: steel C45 (equal St 60)

blank, Kanten gerundet
 bright, rounded corners

, weitere Größen /
 , other dimensions

mm

RoHS
 Konform
 Compliant

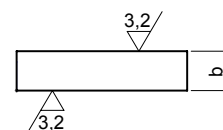
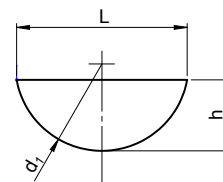
b	h	L											
02	02	06	08	10	12	14	15	16	18	-	-	-	-
03	03	-	08	10	12	14	16	18	20	22	25	-	-
04	04	-	08	10	12	14	16	18	20	22	25	-	-
05	05	12	14	16	18	20	22	25	28	32	36	40	-
06	06	-	14	16	18	20	22	25	28	32	36	40	-
08	07	18	20	22	25	28	32	36	40	45	50	-	-
10	08	-	-	22	25	28	32	36	40	45	50	56	70
12	08	-	-	-	-	28	32	36	40	45	50	56	70
14	09	-	-	-	-	-	-	36	40	45	50	56	-

SM 1137-4

DIN 6888 / ISO 3912

Scheibenfeder

Disc key



Catalog No.	b	X	h	Material
SM 1137-4	02	X	05.0	ST

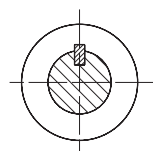
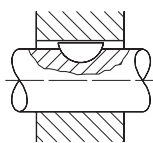
ST: Stahl C45 (entspr. St 60)
ST: steel C45 (equal St 60)

blank
 bright

mm

, weitere Größen /
 , other dimensions

RoHS
 Konform
 Compliant



b	h	d ₁	L	kg
02	03.7	10	9,7	0,001
03	05,0	13	12,6	0,001
03	06,5	16	15,7	0,002
04	05,0	13	12,6	0,002
04	06,5	16	15,7	0,002
04	07,5	19	18,6	0,003
05	06,5	16	15,7	0,003
05	07,5	19	18,6	0,004
05	09,0	22	21,6	0,006

b	h	d ₁	L	kg
06	09,0	22	21,6	0,007
06	10,0	25	24,5	0,009
06	11,0	28	27,3	0,011
08	11,0	28	27,3	0,014
08	13,0	32	31,4	0,019
10	13,0	32	31,4	0,024
10	16,0	45	43,1	0,040