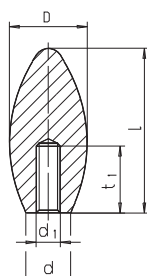


SM 1266-1

Aufsteckgriff Kunststoff Grip, plastic



Form C

D	d ₁	t ₁	d	l	kg
∅	∅	min.	∅		
14	M05	25	7	34	0,005
23	M06	17	14	60	0,021
23	M08	22	14	60	0,020
26	M08	25	16	70	0,028
26	M10	25	16	70	0,027
30	M10	26	16	65	0,038
30	M12	26	16	65	0,034
35	M12	25	22	85	0,070
35	M16	25	22	85	0,058

Catalog No. SM 1266-1 **Form** C **D** 30 **d₁** M10

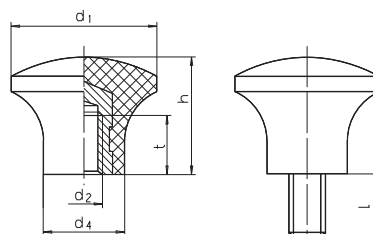
Kunststoff (Duroplast PF),
schwarz glänzend,
temperaturbeständig bis 110° C
plastic Duroplast (Phenolic PF)
black, shiny finish
temperature resistant up to 110° C



Form C: Kunststoffgewinde / plastic thread

SM 1267

Pilzgriff Kunststoff Mushroom knob, plastic



Form D

Form E

d ₁	d ₂	d ₃	d ₄	h	l	t	kg	
∅	∅	∅	∅			min.	Form D	Form E
17	M05	M05	10	14	9	7	0,004	0,004
21	M06	M06	12	17	10	11	0,007	0,008
25	M06	M06	14	21	10	11	0,010	0,012
33	M08	M08	18	29	14	12	0,024	0,030

Catalog No. SM 1267 **Form** D **d₁** 21 **d₂** M06

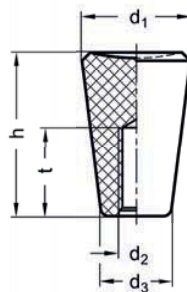
Kunststoff (Duroplast PF),
schwarz glänzend,
temperaturbeständig bis 110° C
plastic Duroplast (Phenolic PF) black,
shiny finish
temperature resistant up to 110° C



Form D: mit Gewindebuchse: Messing
Form E: mit Gewindezapfen: Stahl verzinkt, blau passiviert
Form D: with threaded brass insert
Form E: steel screw, zinc plated, blue passivated

SM 1267-1

Konusknopf Kunststoff Taper knob, plastic



Sichern mit
SM 1301
Lock with

Catalog No. SM 1267-1 **d₁** 20 **d₂** M05

Kunststoff (Duroplast PF),
schwarz glänzend,
temperaturbeständig bis 110° C
plastic Duroplast (Phenolic PF) black,
shiny finish
temperature resistant up to 110° C



Verwendung anstelle von Kugelknöpfen SM 1265 DIN 319 an Schalthebeln,
Schaltstangen usw..
Use on gear levers and handles instead of ball knobs SM 1265 DIN 319.

d ₁	d ₂	d ₃	h	t	kg
∅	∅	≈		min.	
20	M05 / M06	12	30	18	0,008
25	M06 / M08	15	38	18	0,016
30	M08 / M10	18	46	18	0,026
35	M10 / M12	21	53	21	0,044

