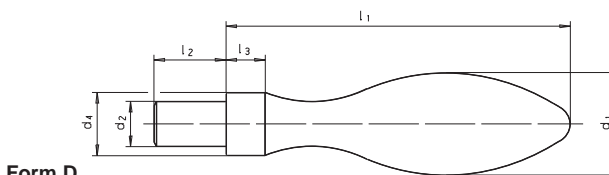


SM 1220

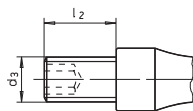
DIN 39

Ballengriff fest

Fixed machine handle



Form D



Form E

Catalog No.	Form	d ₁	Material
SM 1220	D	20	ST

ST: Stahl, verzinkt, blau passiviert
KU: Thermoplast (Polyamid PA) schwarz matt

Gewindezapfen: Stahl brüniert temperaturbeständig bis 100° C

NI: Edelstahl rostfrei 1.4404 (A4), ohne Innensechskant

ST: steel, zinc plated, blue passivated

KU: Technopolymer (Polyamide PA) black matte

threaded stud: steel blackened temperatureresistant up to 100°

NI: stainless steel 1.4404 (A4), without internal hexagon



Form D: zylindrischer Zapfen / cylindrical bolt
Form E: Gewindezapfen / threaded bolt



Reinigen mit **SM 1306**
Clean with



Kleben mit **SM 1301**
Lock with



d ₁ ∅	Form D		Form E			d ₄ h13 ∅	l ₁ ≈	l ₂	l ₃	SW innen / inside		kg	
	d ₂ h8 ∅		d ₃ ∅							ST/KU	NI	ST/NI	KU
	ST	ST	ST	KU	NI								
16	07	M06	-	M06	10	50	11	7	3	-	0,042	-	
20	08	M08	M08	M08	13	64	13	8	4	-	0,088	0,027	
25	10	M10	M10	M10	16	80	14	10	5	-	0,170	0,053	
32	13	M12	M12	-	20	100	21	13	6	-	0,345	0,106	
36	16	M16	-	-	22	112	26	14	8	-	0,508	-	



mm



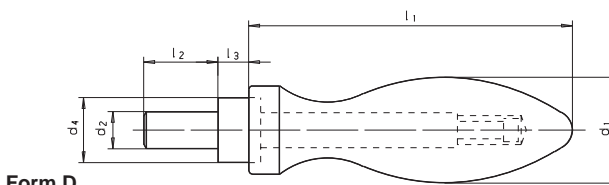
RoHS Konform Compliant

SM 1221

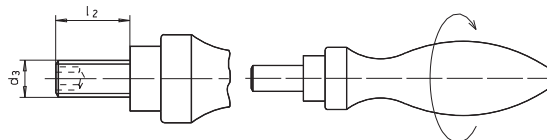
DIN 98

Ballengriff drehbar

Revolving handle



Form D



Form E

Catalog No.	Form	d ₁	Material
SM 1221	D	20	ST

ST: Stahl, verzinkt und blau passiviert
AL: Aluminium, hochglanzpoliert
KU: Kunststoff Thermoplast (Polyamid PA) schwarz matt,

temperaturbeständig bis 110° C

Achsteil: Stahl, verzinkt, blau passiviert unmontiert

ST: steel, zinc plated, blue passivated

AL: aluminium, polished

KU: plastic Technopolymer (Polyamide PA)

temperatureresistant up to 110°,

black, matt finish

spindle: steel zinc plated,

blue passivated

supplied unassembled



Form D: zylindrischer Zapfen / cylindrical bolt
Form E: Gewindezapfen / threaded bolt



d ₁ ∅	Form D			Form E			d ₄ h13 ∅	l ₁ ≈	l ₂	l ₃	SW innen Inside	kg		
	d ₂ h8 ∅			d ₃ ∅								ST	AL	KU
	ST	AL	KU	ST	AL	KU								
16	07	07	07	M06	M06	M06	10	49	11	5,5	3	0,054	0,029	0,023
20	08	08	08	M08	M08	M08	13	61	13	6,0	4	0,099	0,063	0,043
25	10	10	10	M10	M10	M10	16	75	14	8,0	5	0,196	0,110	0,074
32	13	13	13	M12	M12	M12	20	95	21	10,5	6	0,383	0,212	0,154
36	16	16	-	M16	M16	-	22	106	26	11,0	8	0,552	0,300	-



mm

