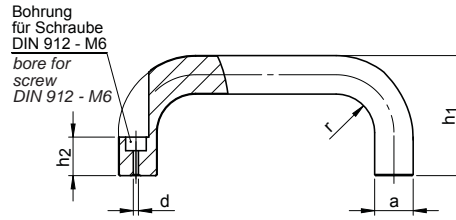


# SM 1269-31

# Bügelgriff Aluminium Cabinet "U"-handle, aluminium



Catalog No.	b	X	l <sub>1</sub>	Colour
SM 1269-31	26	X	116	SW

Aluminium  
**BL** = blank, gleitgeschliffen / bright, tumbled  
**EL** = eloxiert, naturfarben / anodized, natural colour

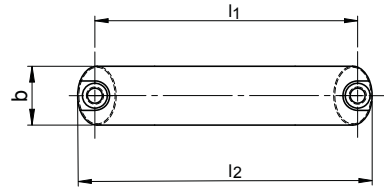
**kunststoffbeschichtet, strukturmatt / plastic coated, textured finish:**  
**RT** = rot / red RAL 3000  
**SW** = schwarz / black RAL 9005  
**SR** = silber / silver RAL 9006

ähnlich SM1269-3, Befestigung der Griffe von der Bedienseite  
*equal to SM 1269-3, You can fix them from the operator side.*

Sonderlängen, UV-beständig in schwarz.  
*special lengths, highly weather-resistant and UV-protective powder coating system in black.*



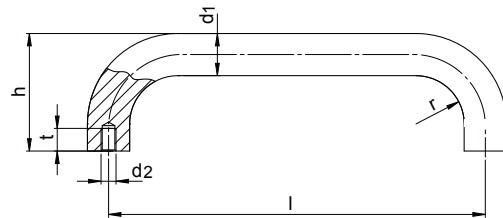
mm



b	l <sub>1</sub> ± 0,25		a	d ∅	h <sub>1</sub>	h <sub>2</sub>	r	l <sub>2</sub>	kg
	BL / EL	RT / SW / SR							
20	100	100	13	5,4	49	19	13	112	0,080
	112	112						124	0,082
	120	120						132	0,090
	128	128						140	0,100
	160	160			51	172	0,110		
26	116	116	17	6,4	55	17	17	130	0,147
	120	120						134	0,150
	132	132						146	0,160
	164	164						178	0,192
	179	179			57	193	0,218		
	196	196			210	0,229			

# SM 1269-32

# Bügelgriff Aluminium Cabinet "U"-handle, aluminium



Catalog No.	d <sub>1</sub>	X	l	Material
SM 1269-32	20	X	200	SW

Aluminium  
**BL** = blank, gleitgeschliffen / bright, tumbled  
**kunststoffbeschichtet, strukturmatt / plastic coated, textured finish:**  
**SW** = schwarz / black RAL 9005  
**SR** = silber / silver RAL 9006

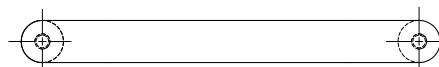
Bügelgriffe d<sub>1</sub> = 28 sind aus Alu-Rohr mit Wandstärke 4 mm gefertigt, Gewindebuchse Aluminium.

*Cabinet „U“ handles d<sub>1</sub> = 28 are manufactured out of aluminum tubing with a wall thickness of 4 mm and fitted with threaded aluminum bushings.*

Sonderlängen, UV-beständig in schwarz.  
*special lengths, highly weather-resistant and UV-protective powder coating system in black.*



mm



d <sub>1</sub> ∅	l ± 0,25		d <sub>2</sub> ∅	h	r	t min.	kg
	BL / SW / SR						
20	200	M08	68	22	15	0,240	
	250	M08	68	22	15	0,285	
	300	M08	68	22	15	0,330	
	350	M08	68	22	15	0,350	
28	250	M10	78	32	15	0,290	
	300	M10	78	32	15	0,330	
	350	M10	78	32	15	0,375	
	400	M10	78	32	15	0,415	

