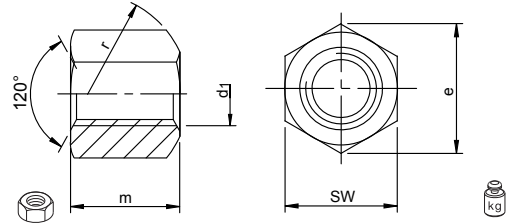
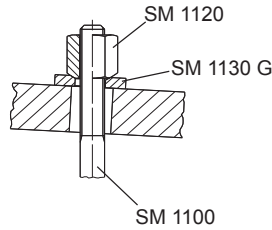


# SM 1120

## DIN 6330

# Sechskantmutter mit kugeligem Ende

## Hexagon nut



d <sub>1</sub> ∅		SW	e	m	r	kg
ST	NI					
M06	-	10	11,5	09	09	0,005
M08	M08	13	15,0	12	11	0,009
M10	M10	16/17*	18,5/19,6*	15	15	0,020
M12	M12	18/19*	20,8/21,9*	18	17	0,028
M14 **	-	21	24,5	21	20	0,045
M16	M16	24	27,7	24	22	0,058
M18 **	-	27	31,2	27	24,5	0,083
M20	M20	30	34,6	30	27	0,110
M22 **	-	34	39,3	33	29	0,130
M24	-	36	41,6	36	32	0,195
M27 **	-	41	47,3	40	36	0,280
M30	-	46	53,1	45	41	0,405
M36	-	55	63,5	54	50	0,715
M42	-	65	75,0	63	58	1,170
M48	-	75	86,5	72	67	1,800

Catalog No.	d <sub>1</sub>	Material
SM 1120	M12	NI

**ST:** Stahl, Güte 10 / steel, grade 10  
**NI:** Edelstahl rostfrei, stainless steel

Dazu passend:  
 Scheiben SM 1125 / DIN 6340  
 Kugelscheiben SM 1130 / DIN 6319.  
 Kugelradius "r" passend zu Kegelpfannen SM 1130 D / DIN 6319.  
 Zum Ausgleich nicht paralleler Spannflächen.  $m = 1,5 \times d_1$ .  
 \* nach DIN 6330 B (z. T. NI), \*\* nicht in der DIN enthalten



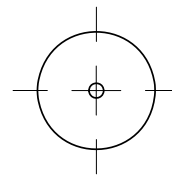
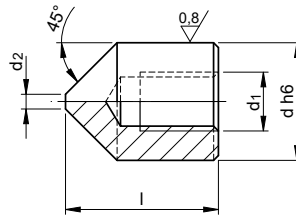
Suitable for this parts: Flat end matching hardened washers SM 1125 / DIN 6340. With spherical end matching taper face of washers SM 1130D or G / DIN 6319 D or G.  
 \* like DIN 6330 B (NI), \*\* not part of the german DIN.



# SM 1121

# Spannspitze

## Clamping tip



Catalog No.	d	X	l
SM 1121	10.0	X	14

HSS, gehärtet  
 HSS, hardened

andere Abmessungen  
 other dimensions

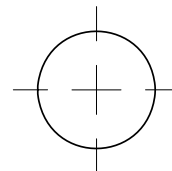
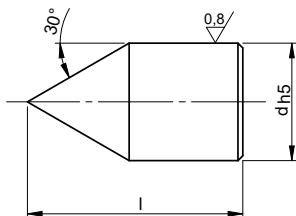


d	l	d <sub>1</sub>	d <sub>2</sub>	max. Belastung/ max. pressure [kN]	kg
06,0	10	M03	0,5	10	0,002
08,0	12	M04	0,5		0,004
10,0	14	M05	0,6		0,007
12,0	16	M06	1,5		0,012
12,7	16	M06	1,5		0,014

# SM 1122

# Kegelspitze

## Cone tip



d	l	kg
05,0	12	0,003
06,0	12	0,004
07,0	14	0,006
08,0	16	0,008
10,0	20	0,016
11,0	20	0,019
12,0	22	0,026
14,0	22	0,031
15,0	22	0,034
16,0	26	0,049
18,0	30	0,072
20,0	32	0,093
22,0	32	0,106
23,0	32	0,113
25,0	40	0,182
28,0	42	0,231
30,0	45	0,284

Catalog No.	d	X	l
SM 1122	12.0	X	22

Hartmetall  
 carbide

andere Abmessungen  
 other dimensions

