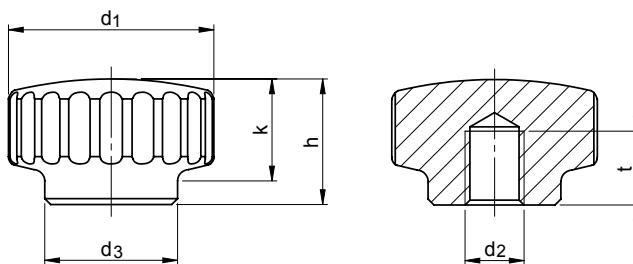


SM 1254



Edelstahl-Rändelmuttern

Stainless steel-knurled nuts



Catalog No.	d ₁	X	d ₂	Surface
SM 1254	20	X	M05	MT



Edelstahl nichtrostend, 1.4301
stainless steel, 1.4301



MT: matt gestraht / matt blasted
PL: poliert / polished



mm



Besonders geeignet für ein Umfeld mit hygienischen Anforderungen.

The knurling of the stainless steel-knurled nuts allows a use in an environment with hygienic requirements.



d ₁ Ø	d ₂ Ø	€		d ₃ Ø	h	k	t min.	kg
		MT	PL					
20	M05	3,52	7,59	14	13	8,5	8	0,024
24	M06	4,09	8,19	16	15	10,5	9	0,038
28	M08	4,82	8,88	18	17	12,5	10	0,058

SM 1254-1



Catalog No.	d ₁	Farbe
SM 1254-1	M05	RT



Aluminium, eloxiert
Aluminium, anodized



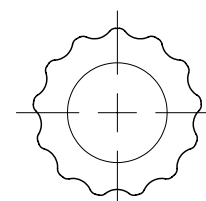
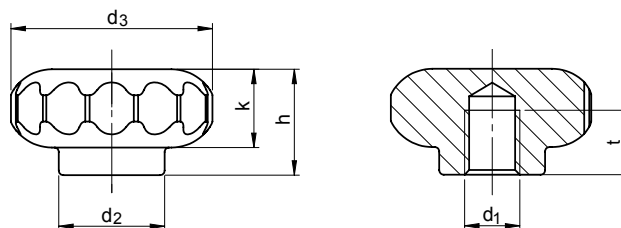
EL = natur / natural
RT = rot / red
GR = grün / green
BL = blau / blue
SW = schwarz / black



mm

Rändelmuttern, Aluminium

Knurled nuts, Aluminium



d ₁ Ø	€	d ₂ Ø	d ₃ Ø	h	k	t	kg
M05	3,25	9,0	19	10,0	7,0	5,0	0,005
M06	3,90	11,5	22	11,5	8,5	7,0	0,008
M08	4,69	13,0	27	14,0	10,0	9,0	0,013