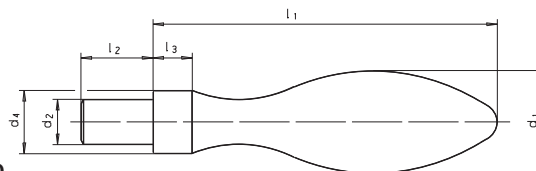


# SM 1220

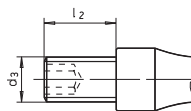
DIN 39

# Ballengriff fest

Fixed machine handle



Form D



Form E

| Catalog No. | Form | d <sub>1</sub> | Material |
|-------------|------|----------------|----------|
| SM 1220     | D    | 20             | ST       |

**ST:** Stahl, verzinkt, blau passiviert  
**KU:** Thermoplast (Polyamid PA) schwarz matt

Gewindezapfen: Stahl brüniert temperaturbeständig bis 100° C

**NI:** Edelstahl rostfrei 1.4404 (A4), ohne Innensechskant

**ST:** steel, zinc plated, blue passivated

**KU:** Technopolymer (Polyamide PA) black matte

threaded stud: steel blackened temperatureresistant up to 100°

**NI:** stainless steel 1.4404 (A4), without internal hexagon

**Form D:** zylindrischer Zapfen / cylindrical bolt  
**Form E:** Gewindezapfen / threaded bolt

Reinigen mit **SM 1306**  
Clean with

Kleben mit **SM 1301**  
Lock with



mm



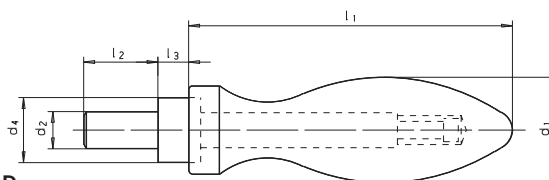
| d <sub>1</sub><br>∅ | Form D                 |                     | Form E |     |    | d <sub>4</sub><br>h13<br>∅ | l <sub>1</sub><br>≈ | l <sub>2</sub> | l <sub>3</sub> | SW<br>innen / inside |       | kg    |    |
|---------------------|------------------------|---------------------|--------|-----|----|----------------------------|---------------------|----------------|----------------|----------------------|-------|-------|----|
|                     | d <sub>2</sub> h8<br>∅ | d <sub>3</sub><br>∅ |        |     |    |                            |                     |                |                | ST/KU                | NI    | ST/NI | KU |
|                     | ST                     | ST                  | KU     | NI  |    |                            |                     |                |                |                      |       |       |    |
| 16                  | 07                     | M06                 | -      | M06 | 10 | 50                         | 11                  | 7              | 3              | -                    | 0,042 | -     |    |
| 20                  | 08                     | M08                 | M08    | M08 | 13 | 64                         | 13                  | 8              | 4              | -                    | 0,088 | 0,027 |    |
| 25                  | 10                     | M10                 | M10    | M10 | 16 | 80                         | 14                  | 10             | 5              | -                    | 0,170 | 0,053 |    |
| 32                  | 13                     | M12                 | M12    | -   | 20 | 100                        | 21                  | 13             | 6              | -                    | 0,345 | 0,106 |    |
| 36                  | 16                     | M16                 | -      | -   | 22 | 112                        | 26                  | 14             | 8              | -                    | 0,508 | -     |    |

# SM 1221

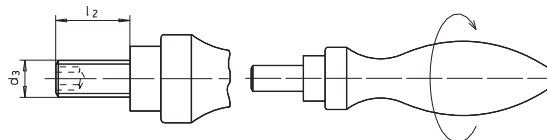
DIN 98

# Ballengriff drehbar

Revolving handle



Form D



Form E

| Catalog No. | Form | d <sub>1</sub> | Material |
|-------------|------|----------------|----------|
| SM 1221     | D    | 20             | ST       |

**ST:** Stahl, verzinkt und blau passiviert  
**AL:** Aluminium, hochglanzpoliert  
**KU:** Kunststoff Thermoplast (Polyamid PA) schwarz matt,

temperaturbeständig bis 110° C

Achsteil: Stahl, verzinkt, blau passiviert unmontiert

**ST:** steel, zinc plated, blue passivated

**AL:** aluminium, polished

**KU:** plastic Technopolymer (Polyamide PA)

temperaturresistant up to 110°,

black, matt finish

spindle: steel zinc plated,

blue passivated

supplied unassembled

**Form D:** zylindrischer Zapfen / cylindrical bolt  
**Form E:** Gewindezapfen / threaded bolt



mm

| d <sub>1</sub><br>∅ | Form D                 |                     |    | Form E |     |     | d <sub>4</sub><br>h13<br>∅ | l <sub>1</sub><br>≈ | l <sub>2</sub> | l <sub>3</sub> | SW<br>innen<br>Inside | kg    |       |       |
|---------------------|------------------------|---------------------|----|--------|-----|-----|----------------------------|---------------------|----------------|----------------|-----------------------|-------|-------|-------|
|                     | d <sub>2</sub> h8<br>∅ | d <sub>3</sub><br>∅ |    | ST     | AL  | KU  |                            |                     |                |                |                       | ST    | AL    | KU    |
|                     | ST                     | AL                  | KU | ST     | AL  | KU  |                            |                     |                |                |                       |       |       |       |
| 16                  | 07                     | 07                  | 07 | M06    | M06 | M06 | 10                         | 49                  | 11             | 5,5            | 3                     | 0,054 | 0,029 | 0,023 |
| 20                  | 08                     | 08                  | 08 | M08    | M08 | M08 | 13                         | 61                  | 13             | 6,0            | 4                     | 0,099 | 0,063 | 0,043 |
| 25                  | 10                     | 10                  | 10 | M10    | M10 | M10 | 16                         | 75                  | 14             | 8,0            | 5                     | 0,196 | 0,110 | 0,074 |
| 32                  | 13                     | 13                  | 13 | M12    | M12 | M12 | 20                         | 95                  | 21             | 10,5           | 6                     | 0,383 | 0,212 | 0,154 |
| 36                  | 16                     | 16                  | -  | M16    | M16 | -   | 22                         | 106                 | 26             | 11,0           | 8                     | 0,552 | 0,300 | -     |

