

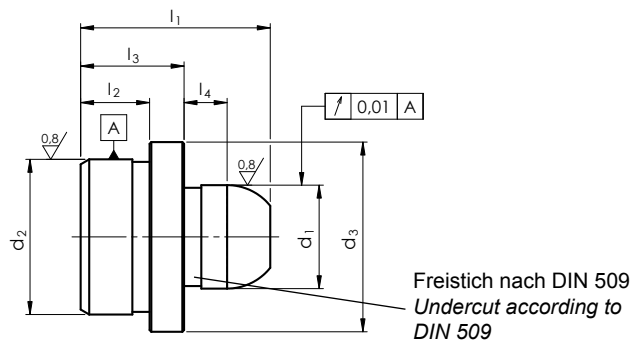
# SM 1280-12

LN 65622



# Fixierzapfen

Locator pin



Catalog No. **d<sub>1</sub>**  
SM 1280-12 12



Spezialstahl  
special steel



gehärtet und geschliffen  
hardened and ground



HRc = 55 + 2

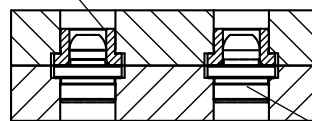


mm



Sondermaße  
special dimensions

SM1001



SM1280-12

kg

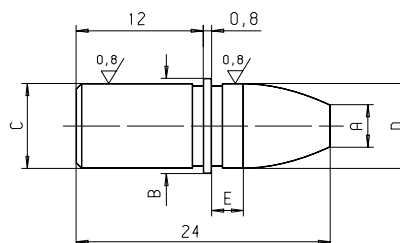
d <sub>1</sub>	d <sub>2</sub>	d <sub>3</sub>	l <sub>1</sub>	l <sub>2</sub>	l <sub>3</sub>	l <sub>4</sub>	r	kg
m6 ∅	n6 ∅	-0,2 ∅						
06	10	14	17,5	7	10	4,5	3,5	0,009
08	12	16	18,0	7	10	4,5	4,0	0,013
12	18	22	22,0	8	12	5,0	6,0	0,035
16	26	30	30,0	12	16	7,0	8,0	0,091
20	30	35	38,0	15	20	9,0	10,0	0,158

# SM 1280-2



# Führungsbolzen

Dowel



Catalog No. **D**  
SM 1280-2 06



Spezialstahl  
special steel



gehärtet und geschliffen  
hardened and ground



HRc = 55 + 2



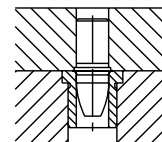
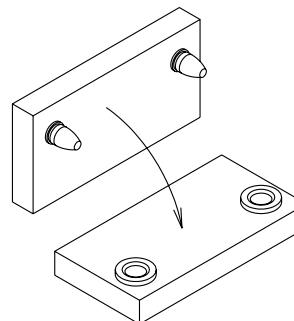
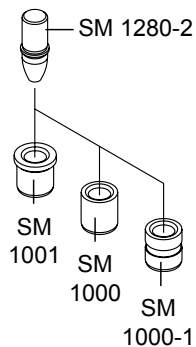
mm



Reinigen mit  
SM 1306  
Clean with



Kleben mit  
SM 1300  
Lock with



kg

D h6 ∅	A	B	C	E	kg
06	3	7	06	3,0	0,005
08	4	9	08	3,0	0,008
10	5	11	10	4,5	0,013
12	6	13	12	4,5	0,015