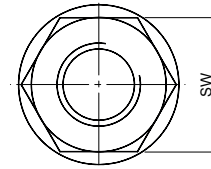
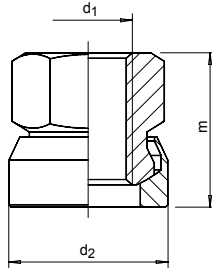


# SM 1270-3 Sechskantmutter mit Kegelpfanne, mit kleiner Auflagefläche

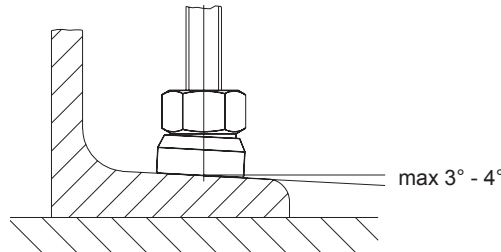
Hexagon collar nut with conical seat, with small surface



**Catalog No.** **d<sub>1</sub>**  
SM 1270-3 M16

Vergütungsstahl, vergütet, brüniert  
heat-treated steel, tempered, blackened

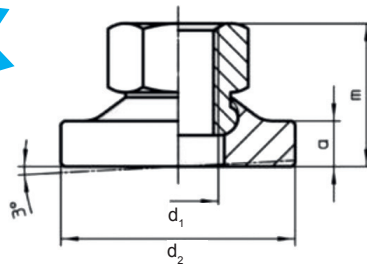
mm



d <sub>1</sub>	d <sub>2</sub>	m	SW	kg
∅	∅			
M08	17	14,0	13	0,012
M10	21	17,5	16	0,024
M12	24	21,5	18	0,038
M16	30	28,0	24	0,074
M20	36	35,0	30	0,143
M24	44	42,5	36	0,260
M30	55	56,0	46	0,558

# SM 1270-31 Sechskantmutter mit Kegelpfanne, mit großer Auflagefläche

Hexagon collar nut with conical seat, with large surface



**Catalog No.** **d<sub>1</sub>**  
SM 1270-31 M16

Vergütungsstahl, vergütet, brüniert  
heat-treated steel, tempered, blackened

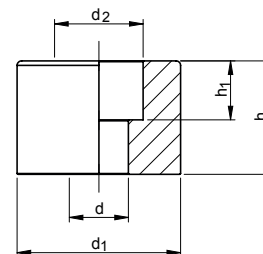
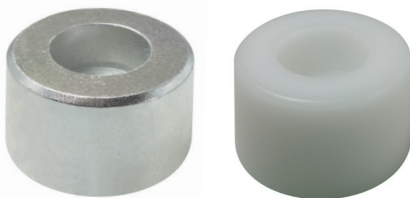
mm



d <sub>1</sub>	a	d <sub>2</sub>	d <sub>3</sub>	m	SW	kg
∅		∅	∅			
M08	4,0	24	17,8	14,0	13	0,020
M10	5,5	30	21,2	17,5	16	0,040
M12	7,0	36	25,2	21,5	18	0,069
M16	8,0	44	30,9	28,0	24	0,126
M20	9,5	50	39,9	35,0	30	0,213
M24	11,0	60	49,6	42,5	36	0,377
M30	14,0	68	61,3	56,0	46	0,702

# SM 1270-5 Fuß

Foot



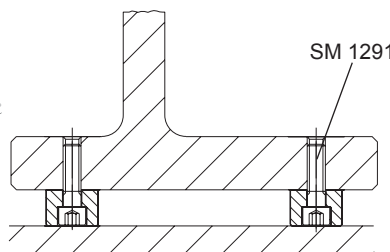
**Catalog No.** **h** **Form**  
SM 1270-5 12 KU

ST: Stahl, verzinkt / steel, zinc plated

NI: Edelstahl rostfrei 1.4305 / stainless steel 1.4305

KU: Kunststoff / plastic

mm



h	d	d <sub>1</sub>	d <sub>2</sub>	h <sub>1</sub>	kg	
					ST / NI	KU
10	5,5	16	9,0	05	0,012	0,002
12	6,5	20	11,0	07	0,023	0,004
16	8,5	25	14,0	09	0,048	0,009
20	10,5	32	17,0	11	0,100	0,017
25	13,0	36	19,5	13	0,156	0,030

