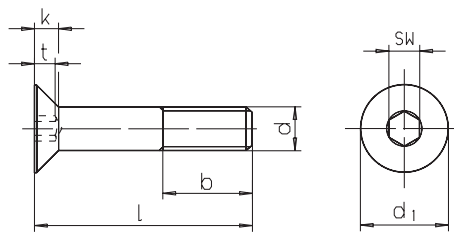
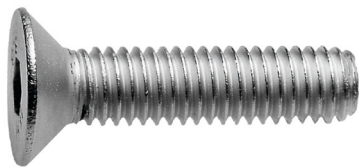


SM 1291-03

ISO 10642 (ehem. DIN 7991)

Senkschraube mit Innensechskant

Hexagon socket countersunk head screw



Catalog No.	d	X	l	Material
SM 1291-03	M10	X 020		ST



ST: Stahl, verzinkt
steel, zinc plated




Festigkeitsklasse 8.8
grade 8.8



mm



 , andere Abmessungen und Materialien
other dimensions and materials




Gewinde bis Kopf möglich
thread up to screw head possible



Reinigen mit
SM 1306
Clean with



Kleben mit
SM 1301
Lock with

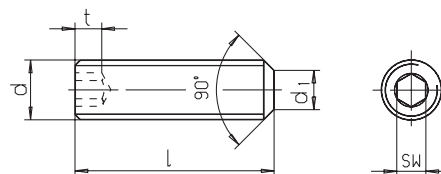
k	2,48	3,10	3,72	4,96	6,20	7,44
t	1,5	1,9	2,2	3,0	3,6	4,3
b	20,0	22,0	24,0	28,0	32,0	36,0
d ₁ ∅	8,96	11,20	13,44	17,92	22,40	26,80
SW	2,5	3,0	4,0	5,0	6,0	8,0
l	d ∅ 					
010	M04	M05	M06	-	-	-
012	M04	M05	M06	-	-	-
016	M04	M05	M06	M08	M10	-
020	M04	M05	M06	M08	M10	M12
025	M04	M05	M06	M08	M10	M12
030	-	M05	M06	M08	M10	M12
035	-	-	M06	M08	M10	M12
040	-	-	M06	M08	M10	M12
045	-	-	M06	M08	M10	M12
050	-	-	M06	M08	M10	M12
060	-	-	M06	M08	M10	M12
070	-	-	-	-	M10	M12
080	-	-	-	-	-	M12

SM 1291-04

DIN 913 / ISO 4026

Gewindestift mit Innensechskant und Kegelkuppe

Hexagon socket set screw with flat point



Catalog No.	d	X	l	Material
SM 1291-04	M05	X 012		ST



ST: Stahl, verzinkt
steel, zinc plated



Festigkeitsklasse 45H
grade 45H



mm








Reinigen mit
SM 1306
Clean with



Kleben mit
SM 1301
Lock with

d ₁ ∅	2,0	2,5	3,5	4,0	5,5	7,0
t	1,2	1,5	2,0	2,0	3,0	4,0
SW	1,5	2,0	2,5	3,0	4,0	5,0
l	d ∅ 					
005	M03	M04	M05	-	-	-
006	M03	M04	M05	M06	-	-
008	M03	M04	M05	M06	M08	-
010	M03	M04	M05	M06	M08	M10
012	M03	M04	M05	M06	M08	M10
016	M03	M04	M05	M06	M08	M10
020	M03	M04	M05	M06	M08	M10
025	-	M04	M05	M06	M08	M10
030	-	-	M05	M06	M08	M10
035	-	-	-	M06	M08	M10
040	-	-	-	M06	M08	M10
045	-	-	-	M06	M08	M10
050	-	-	-	M06	M08	M10
060	-	-	-	M06	M08	M10
070	-	-	-	-	M08	M10
080	-	-	-	-	M08	M10
090	-	-	-	-	-	M10
100	-	-	-	-	-	M10