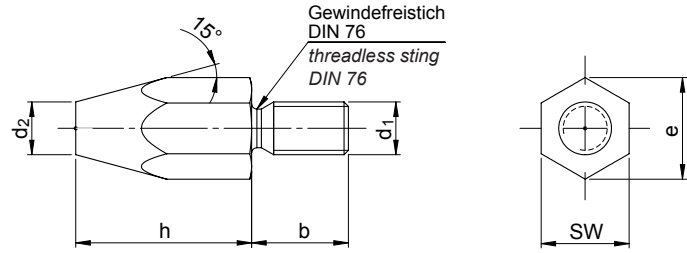


# SM 1285

DIN 6320

# Fuß

Foot with threaded stem



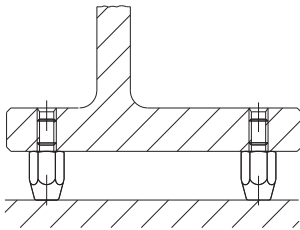
	<b>Catalog No.</b>	<b>h</b>	<b>d<sub>1</sub></b>
	SM 1285	30	M08

Vergütungsstahl, ungehärtet, brüniert  
Heat-treated steel, unhardened, blackened

Auflagefläche ohne Zentrum  
Support surface without centre.

mm

RoHS Konform Compliant



Reinigen mit SM 1306  
Clean with

Kleben mit SM 1301  
Lock with

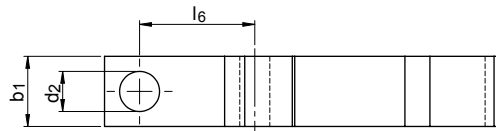
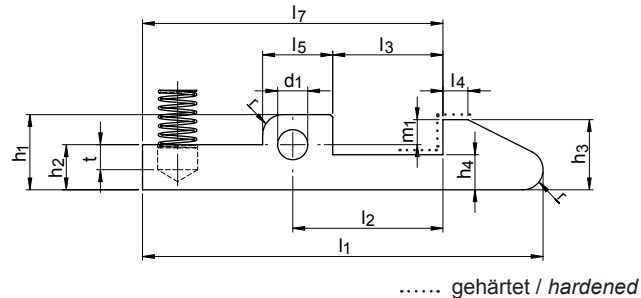
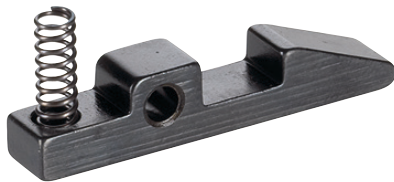
h	d <sub>1</sub>	d <sub>2</sub>	b	SW	e	kg
10	M06	08	11	10	11,5	0,008
20	M06	06	11	10	11,5	0,013
15	M08	10	13	13	15,0	0,018
30	M08	09	13	13	15,0	0,033
20	M10	13	16	17	19,6	0,044
40	M10	13	16	17	19,6	0,080
25	M12	15	20	19	21,9	0,070
50	M12	15	20	19	21,9	0,126

# SM 1290

DIN 6310

# Schnappverschluss mit Feder

Snap with spring



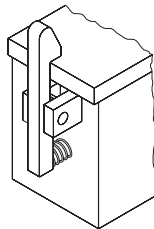
	<b>Catalog No.</b>	<b>l<sub>1</sub></b>
	SM 1290	60

Vergütungsstahl, brüniert  
Heat-treated steel, blackened

mm

inklusive Feder  
spring included

RoHS Konform Compliant



l <sub>1</sub>	b <sub>1</sub>	d <sub>1</sub>	d <sub>2</sub>	h <sub>1</sub>	h <sub>2</sub>	h <sub>3</sub>	h <sub>4</sub>	l <sub>2</sub>	l <sub>3</sub>	l <sub>4</sub>	l <sub>5</sub>	l <sub>6</sub>	l <sub>7</sub>	m <sub>1</sub>	t	r	kg
45	08	4	5,0	9,5	5,5	08	4	15	10	2	09	11	30	2,5	1,5	1,6	0,015
60	10	5	6,3	12,0	7,0	10	5	20	14	3	11	15	40	3,0	3,0	2,5	0,032
80	14	6	8,0	15,0	9,0	14	7	30	22	5	14	23	60	5,0	5,0	4,0	0,080

